

Product datasheet for **TP309124**

STX1B (NM_052874) Human Recombinant Protein

Product data:

Product Type:	Recombinant Proteins
Description:	Recombinant protein of human syntaxin 1B (STX1B), 20 µg
Species:	Human
Expression Host:	HEK293T
Expression cDNA Clone or AA Sequence:	>RC209124 protein sequence Red =Cloning site Green =Tags(s)

MKDRTQELRSKDSDDDEEVHVDRDHFMDFFEQVEEIRGCIEKLSERVEDVQVKKQHSAILAAPNPDEKT
KQELEDLTADIKKTANKVRSKLLKAIQSIQEEGLNRSSADLRIRKTKQHSTLSRKFFVEVMTEYNATQSKY
RDRCKDRIQRQLEITGRITTTNEELEDMLGKLAIFTDDIKMDSQMTKQALNEIETRHNEIIKLETSIRE
LHDMFVDMAMLVESQGEMIDRIEYNVEHSVDYVERAVSDTKKAVKYQSKARRKKIMIIICCVLGVVLAS
SIGGTLGL

TRTRPLEQKLISEEDLAANDILDYKDDDDKV

Tag:	C-Myc/DDK
Predicted MW:	33.1 kDa
Concentration:	>0.05 µg/µL as determined by microplate BCA method
Purity:	> 80% as determined by SDS-PAGE and Coomassie blue staining
Buffer:	25 mM Tris-HCl, 100 mM glycine, pH 7.3, 10% glycerol
Preparation:	Recombinant protein was captured through anti-DDK affinity column followed by conventional chromatography steps.
Note:	For testing in cell culture applications, please filter before use. Note that you may experience some loss of protein during the filtration process.
Storage:	Store at -80°C.
Stability:	Stable for 12 months from the date of receipt of the product under proper storage and handling conditions. Avoid repeated freeze-thaw cycles.
RefSeq:	<u>NP_443106</u>
Locus ID:	112755



[View online »](#)

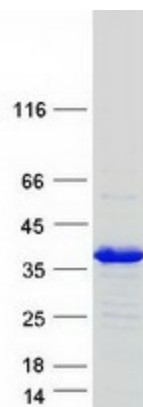
UniProt ID: [P61266](#)
RefSeq Size: 4544
Cytogenetics: 16p11.2
RefSeq ORF: 864
Synonyms: GEFSP9; STX1B1; STX1B2

Summary: The protein encoded by this gene belongs to a family of proteins thought to play a role in the exocytosis of synaptic vesicles. Vesicle exocytosis releases vesicular contents and is important to various cellular functions. For instance, the secretion of transmitters from neurons plays an important role in synaptic transmission. After exocytosis, the membrane and proteins from the vesicle are retrieved from the plasma membrane through the process of endocytosis. Mutations in this gene have been identified as one cause of fever-associated epilepsy syndromes. A possible link between this gene and Parkinson's disease has also been suggested. [provided by RefSeq, Jan 2015]

Protein Families: Druggable Genome, Transmembrane

Protein Pathways: SNARE interactions in vesicular transport

Product images:



Coomassie blue staining of purified STX1B protein (Cat# TP309124). The protein was produced from HEK293T cells transfected with STX1B cDNA clone (Cat# [RC209124]) using MegaTran 2.0 (Cat# [TT210002]).