

## Product datasheet for TP309115

### BACE1 (NM\_012104) Human Recombinant Protein

#### Product data:

Product Type:	Recombinant Proteins
Description:	Recombinant protein of human beta-site APP-cleaving enzyme 1 (BACE1), transcript variant a, 20 µg
Species:	Human
Expression Host:	HEK293T
Expression cDNA Clone or AA Sequence:	>RC209115 protein sequence <b>Red</b> =Cloning site <b>Green</b> =Tags(s)

MAQALPWLLLWMGAGVLP AHGTQH GIRLPLRSLGGAPLGLRLPRETDEEPEEPGRRGSFVEMVDNLR  
GK  
SGQGYVEMTVGSPPTLNILVDTGSSNFAVGAAPHFLHRYRQRLSSTYRDLRKGVVPYPTQGKWEGE  
LGTDLVSIPHGPNVTVRANIAAITESDKFFINGSNWEGLGLAYAEIARPDDSLEPFDFSLVKQTHV PNL  
FSLQLCGAGFPLNQSEVLASVGGSMIIGGIDHSLYTGSLWYTPIRREWYVEIIVRVEINGQDLKMDCKE  
YNYDKSIVDSGTTNLR LPKVFEAAVKSIIKAAASSTEKFPDGFWLGEQLVCWQAGTTPWNIFVISLYLMG  
EVTNQSFRTILPQQYLRPVEDVATSQDDCYKFAISQSSTGTVMGAVIMEGFYVDFDRARKRIGFAVSAC  
HVHDEFRTAAVEGPFVTLDMEDCGYNIPQTDESTLMTIAYVMAAICALFMLPLCLMVCQWRCLRCLRQQ  
H  
DDFADDISLLK

**TRTRPLEQKLISEEDLAANDILDYKDDDDKV**

Tag:	C-Myc/DDK
Predicted MW:	55.8 kDa
Concentration:	>0.05 µg/µL as determined by microplate BCA method
Purity:	> 80% as determined by SDS-PAGE and Coomassie blue staining
Buffer:	25 mM Tris-HCl, 100 mM glycine, pH 7.3, 10% glycerol
Preparation:	Recombinant protein was captured through anti-DDK affinity column followed by conventional chromatography steps.
Note:	For testing in cell culture applications, please filter before use. Note that you may experience some loss of protein during the filtration process.
Storage:	Store at -80°C.



[View online »](#)

**Stability:** Stable for 12 months from the date of receipt of the product under proper storage and handling conditions. Avoid repeated freeze-thaw cycles.

**RefSeq:** [NP\\_036236](#)

**Locus ID:** 23621

**UniProt ID:** [P56817](#)

**RefSeq Size:** 5864

**Cytogenetics:** 11q23.3

**RefSeq ORF:** 1503

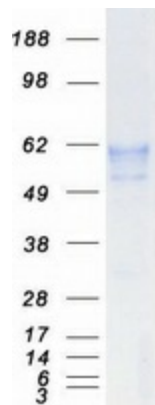
**Synonyms:** ASP2; BACE; HSPC104

**Summary:** This gene encodes a member of the peptidase A1 family of aspartic proteases. Alternative splicing results in multiple transcript variants, at least one of which encodes a preproprotein that is proteolytically processed to generate the mature protease. This transmembrane protease catalyzes the first step in the formation of amyloid beta peptide from amyloid precursor protein. Amyloid beta peptides are the main constituent of amyloid beta plaques, which accumulate in the brains of human Alzheimer's disease patients. [provided by RefSeq, Nov 2015]

**Protein Families:** Druggable Genome, Protease, Transmembrane

**Protein Pathways:** Alzheimer's disease

### Product images:



Coomassie blue staining of purified BACE1 protein (Cat# TP309115). The protein was produced from HEK293T cells transfected with BACE1 cDNA clone (Cat# [RC209115]) using MegaTran 2.0 (Cat# [TT210002]).