

## Product datasheet for **TP309092L**

### carabin (TBC1D10C) (NM\_198517) Human Recombinant Protein

#### Product data:

Product Type:	Recombinant Proteins
Description:	Recombinant protein of human TBC1 domain family, member 10C (TBC1D10C), 1 mg
Species:	Human
Expression Host:	HEK293T
Expression cDNA	>RC209092 protein sequence
Clone or AA Sequence:	Red=Cloning site Green=Tags(s)

MAQALGEDLVQPPELQDDSSSLGSDSELSGPGPYRQADRYGFIGGSSAEPGPGHPPADLIRQREMKWVEM  
TSHWEKTMSRRYKKVKMQCRKGIPALRARCWPLLCGAHVCQKNSPGTQELAEAPGDPQWMETIGRDLH  
RQFPLHEMFVSPQGHGQQGLLQVLKAYTLRPEQGYCQAQGPVAALLMHLPEEAFWCLVQICEVYLP  
YYPGPHMEAVRLDAEVMALLRLLPHVHKHLQVGVGPLYLPEWFLCLFARSLPFPTVLRVWDAFLSEG  
ARVLFVRVGLTLVRLALGTAEQRGACPLLETLGALRAIPPAQLQEEAFMSQVHSVLSERDLQREIKAQL  
AQLPDSAPGPPRPQVRLAGAQAIFEAQQLAGVRRGAKPEVPRIVVQPPEEPRPPRRKPQTRGKTFHGLL  
TRARGPPIEGPPRPQRGSTSFLDTRF

TRTRPLEQKLISEEDLAANDILDYKDDDDKV

Tag:	C-Myc/DDK
Predicted MW:	49.5 kDa
Concentration:	>0.05 µg/µL as determined by microplate BCA method
Purity:	> 80% as determined by SDS-PAGE and Coomassie blue staining
Buffer:	25 mM Tris-HCl, 100 mM glycine, pH 7.3, 10% glycerol
Preparation:	Recombinant protein was captured through anti-DDK affinity column followed by conventional chromatography steps.
Note:	For testing in cell culture applications, please filter before use. Note that you may experience some loss of protein during the filtration process.
Storage:	Store at -80°C.
Stability:	Stable for 12 months from the date of receipt of the product under proper storage and handling conditions. Avoid repeated freeze-thaw cycles.
RefSeq:	<a href="#">NP_940919</a>



[View online »](#)

Locus ID: 374403

UniProt ID: [Q8IV04](#)

RefSeq Size: 1752

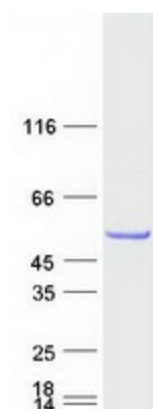
Cytogenetics: 11q13.2

RefSeq ORF: 1338

Synonyms: CARABIN; EPI64C

**Summary:** The protein encoded by this gene has an N-terminal Rab-GTPase domain and a binding site at the C-terminus for calcineurin, and is an inhibitor of both the Ras signaling pathway and calcineurin, a phosphatase regulated by calcium and calmodulin. Genes encoding similar proteins are located on chromosomes 16 and 22. Multiple transcript variants encoding different isoforms have been found for this gene. [provided by RefSeq, Jan 2013]

### Product images:



Coomassie blue staining of purified TBC1D10C protein (Cat# [TP309092]). The protein was produced from HEK293T cells transfected with TBC1D10C cDNA clone (Cat# [RC209092]) using MegaTran 2.0 (Cat# [TT210002]).