

## Product datasheet for **TP309080L**

### CRMP2 (DPYSL2) (NM\_001386) Human Recombinant Protein

#### Product data:

Product Type:	Recombinant Proteins
Description:	Purified recombinant protein of Homo sapiens dihydropyrimidinase-like 2 (DPYSL2), 1 mg
Species:	Human
Expression Host:	HEK293T
Expression cDNA	>RC209080 protein sequence
Clone or AA Sequence:	Red=Cloning site Green=Tags(s)

MSYQGKKNIPRITSDRLLIKGGKIVNDDQSFYADIYMEDGLIKQIGENLIVPGGVKTIEAHSRMVIPGGI  
DVHTRFQMPDQGMTSADFFQGTKAALAGGTTMIIDHVPEPGTSLAAFDQWREWADSKSCCDYSLHVD  
ISEWHKGIQEEMEALVKDHGVNSFLVYMAFKDRFQLTDCQIYEVLSVIRDIGAIQVHAENGDIIEEQQ  
RILDGIGTPEGHLSRPEEVEAEAVNRAITIANQTNCPYITKVMSSAEVIAQARKKGTVVYGEPI  
ASLGTGDSHYWSKNWAKAAAFVTSPLSPDPTTDFLNSLLSCGDLQVTGSAHCTFNQAQKAVGKDNFTL  
IPEGTNGTEERMSVIWDKAVVTGKMDENQFVAVTSTNAAKVFNLVPRKGRIAVGSDADLVIWDPDSVKTI  
SAKTHNSSLEYNIFEGMECRGSPVVISQGVKIVLEDGTLHVTEGSGRYIPRKPFPDFVYKRIKARSRLAE  
LRGVPRGLYDGPVCEVSVTPKVTVPASSAKTSPAKQQAPPVRNLHQSGFSLSGAQIDDNIPRRTTQRIVA  
PPGGRANITSLG

TRTRPLEQKLISEEDLAANDILDYKDDDDKV

Tag:	C-Myc/DDK
Predicted MW:	62.1 kDa
Concentration:	>0.05 µg/µL as determined by microplate BCA method
Purity:	> 80% as determined by SDS-PAGE and Coomassie blue staining
Buffer:	25 mM Tris-HCl, 100 mM glycine, pH 7.3, 10% glycerol
Bioactivity:	WB positive control (PMID: <a href="#">29774780</a> )
Preparation:	Recombinant protein was captured through anti-DDK affinity column followed by conventional chromatography steps.
Note:	For testing in cell culture applications, please filter before use. Note that you may experience some loss of protein during the filtration process.
Storage:	Store at -80°C.



[View online »](#)

**Stability:** Stable for 12 months from the date of receipt of the product under proper storage and handling conditions. Avoid repeated freeze-thaw cycles.

**RefSeq:** [NP\\_001377](#)

**Locus ID:** 1808

**UniProt ID:** [Q16555](#)

**RefSeq Size:** 4638

**Cytogenetics:** 8p21.2

**RefSeq ORF:** 1716

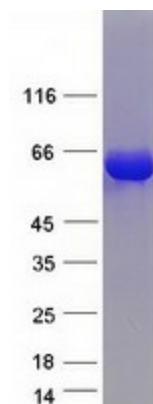
**Synonyms:** CRMP-2; CRMP2; DHPRP2; DRP-2; DRP2; N2A3; ULIP-2; ULIP2

**Summary:** This gene encodes a member of the collapsin response mediator protein family. Collapsin response mediator proteins form homo- and hetero-tetramers and facilitate neuron guidance, growth and polarity. The encoded protein promotes microtubule assembly and is required for Sema3A-mediated growth cone collapse, and also plays a role in synaptic signaling through interactions with calcium channels. This gene has been implicated in multiple neurological disorders, and hyperphosphorylation of the encoded protein may play a key role in the development of Alzheimer's disease. Alternatively spliced transcript variants encoding multiple isoforms have been observed for this gene. [provided by RefSeq, Sep 2011]

**Protein Families:** Druggable Genome

**Protein Pathways:** Axon guidance

### Product images:



Coomassie blue staining of purified DPYSL2 protein (Cat# [TP309080]). The protein was produced from HEK293T cells transfected with DPYSL2 cDNA clone (Cat# [RC209080]) using MegaTran 2.0 (Cat# [TT210002]).