

## Product datasheet for **TP309075M**

### **TUBB2B (NM\_178012) Human Recombinant Protein**

#### **Product data:**

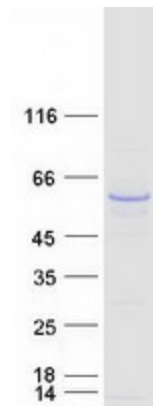
<b>Product Type:</b>	Recombinant Proteins
<b>Description:</b>	Recombinant protein of human tubulin, beta 2B (TUBB2B), 100 µg
<b>Species:</b>	Human
<b>Expression Host:</b>	HEK293T
<b>Expression cDNA Clone or AA Sequence:</b>	>RC209075 protein sequence <b>Red</b> =Cloning site <b>Green</b> =Tags(s)  MREIVHIQAGQCGNQIGAKFWEVISDEHGIDPTGSYHGSDQLERINVYNEATGNKYVPRAILVDLEP GTMDSVRSRSGPFGQIFRPDNFVFGQSGAGNNWAKGHYTEGAELVDSVLDVWRKESESCDCLQGFQLTHSLG GGTGSGMGTLISKIREEYPDRIMNTFSVMPSPKVSDTVPEYNATLSVHQLVENTDETYCIDNEALYDI CFRTLKLTPTYGDLNHLVSATMSGVTTCLRFPQNLADLRKLVANMVPFRLHFFMPGFAPLTSRGSQQ YRALVPELTQQMFDSKNMMAACDPRHGRYLTVAAIFRGRMSMKEVDEQMLNVQKNKSSYFVEWIPNNVK TAVCDIPPRGLKMSATFIGNSTAIQELFKRISEQFTAMFRRKAFLHWYTGEGMDEMEFTEAESNMNDLVS EYQQYQDATADEQGEFEFEFEDEA  <b>TRTRPLEQKLISEEDLAANDILDYKDDDDKV</b>
<b>Tag:</b>	C-Myc/DDK
<b>Predicted MW:</b>	49.8 kDa
<b>Concentration:</b>	>0.05 µg/µL as determined by microplate BCA method
<b>Purity:</b>	> 80% as determined by SDS-PAGE and Coomassie blue staining
<b>Buffer:</b>	25 mM Tris-HCl, 100 mM glycine, pH 7.3, 10% glycerol
<b>Preparation:</b>	Recombinant protein was captured through anti-DDK affinity column followed by conventional chromatography steps.
<b>Note:</b>	For testing in cell culture applications, please filter before use. Note that you may experience some loss of protein during the filtration process.
<b>Storage:</b>	Store at -80°C.
<b>Stability:</b>	Stable for 12 months from the date of receipt of the product under proper storage and handling conditions. Avoid repeated freeze-thaw cycles.
<b>RefSeq:</b>	<u><a href="#">NP_821080</a></u>



[View online »](#)

Locus ID:	347733
UniProt ID:	<a href="#">Q9BVA1</a> , <a href="#">A0A384MEE3</a>
RefSeq Size:	2019
Cytogenetics:	6p25.2
RefSeq ORF:	1335
Synonyms:	bA506K6.1; CDCBM7; PMGYSA
Summary:	The protein encoded by this gene is a beta isoform of tubulin, which binds GTP and is a major component of microtubules. This gene is highly similar to TUBB2A and TUBB2C. Defects in this gene are a cause of asymmetric polymicrogyria. [provided by RefSeq, Mar 2010]
Protein Families:	Druggable Genome
Protein Pathways:	Gap junction, Pathogenic Escherichia coli infection

### Product images:



Coomassie blue staining of purified TUBB2B protein (Cat# [TP309075]). The protein was produced from HEK293T cells transfected with TUBB2B cDNA clone (Cat# [RC209075]) using MegaTran 2.0 (Cat# [TT210002]).