

Product datasheet for **TP309075L**

TUBB2B (NM_178012) Human Recombinant Protein

Product data:

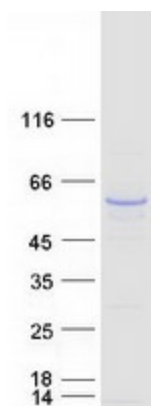
Product Type:	Recombinant Proteins
Description:	Recombinant protein of human tubulin, beta 2B (TUBB2B), 1 mg
Species:	Human
Expression Host:	HEK293T
Expression cDNA Clone or AA Sequence:	>RC209075 protein sequence Red =Cloning site Green =Tags(s)
	<p>MREIVHIQAGQCGNQIGAKFWEVISDEHGIDPTGSYHGSDQLERINVYYNEATGNKYVPRAILVDLEP GTMDSVRSRSGPFGQIFRPDNFVFGQSGAGNNWAKGHYTEGAELVDSVLDVWRKESESCDCLQGFQLTHSLG GGTGSGMGTLISKIREEYPDRIMNTFSVMPSPKVSDTVPEYNATLSVHQLVENTDETYCIDNEALYDI CFRTLKLTPTYGDLNHLVSATMSGVTTCLRFPQNLNADLRKLVANMVPFRLHFFMPGFAPLTSRGSQQ YRALVPELTQQMFDSKNMMAACDPRHGRYLTVAAIFRGRMSMKEVDEQMLNVQKNKSSYFVEWIPNNVK TAVCDIPPRGLKMSATFIGNSTAIQELFKRISEQFTAMFRRKAFLHWYTGEGMDEMEFTEAESNMNDLVS EYQQYQDATADEQGEFEFEFEDEA</p> <p>TRTRPLEQKLISEEDLAANDILDYKDDDDKV</p>
Tag:	C-Myc/DDK
Predicted MW:	49.8 kDa
Concentration:	>0.05 µg/µL as determined by microplate BCA method
Purity:	> 80% as determined by SDS-PAGE and Coomassie blue staining
Buffer:	25 mM Tris-HCl, 100 mM glycine, pH 7.3, 10% glycerol
Preparation:	Recombinant protein was captured through anti-DDK affinity column followed by conventional chromatography steps.
Note:	For testing in cell culture applications, please filter before use. Note that you may experience some loss of protein during the filtration process.
Storage:	Store at -80°C.
Stability:	Stable for 12 months from the date of receipt of the product under proper storage and handling conditions. Avoid repeated freeze-thaw cycles.
RefSeq:	<u>NP_821080</u>



[View online »](#)

Locus ID:	347733
UniProt ID:	Q9BVA1 , A0A384MEE3
RefSeq Size:	2019
Cytogenetics:	6p25.2
RefSeq ORF:	1335
Synonyms:	bA506K6.1; CDCBM7; PMGYSA
Summary:	The protein encoded by this gene is a beta isoform of tubulin, which binds GTP and is a major component of microtubules. This gene is highly similar to TUBB2A and TUBB2C. Defects in this gene are a cause of asymmetric polymicrogyria. [provided by RefSeq, Mar 2010]
Protein Families:	Druggable Genome
Protein Pathways:	Gap junction, Pathogenic Escherichia coli infection

Product images:



Coomassie blue staining of purified TUBB2B protein (Cat# [TP309075]). The protein was produced from HEK293T cells transfected with TUBB2B cDNA clone (Cat# [RC209075]) using MegaTran 2.0 (Cat# [TT210002]).