

Product datasheet for **TP309072M**

Chymotrypsin like protease (CTRL) (NM_001907) Human Recombinant Protein

Product data:

Product Type: Recombinant Proteins

Description: Recombinant protein of human chymotrypsin-like (CTRL), 100 µg

Species: Human

Expression Host: HEK293T

Expression cDNA Clone or AA Sequence: >RC209072 protein sequence
Red=Cloning site **Green**=Tags(s)

MLLLSLTSLVLLGSSWGCIPAIKPALSFSQRIVNGENAVLGSWPWQVSLQDSSGFHFCGGSLISQSWV
VTAAHCVNSPGRHFVVLGEYDRSSNAEPLQVLSVSRAITHPSWNSTTMNNDVTLKLASPAQYTTTRISPV
CLASSNEALTEGLTCVTTGWGRLSGVGNVTPAHLQQVALPLVTVNQCRQYWSSITDSMICAGGAGASSC
QGDSGGPLVCQKGNTWVLIGIVSWGTKNCNVRAPAVYTRVSKFSTWINQVIAYN

TRTRPLEQKLISEEDLAANDILDYKDDDDKV

Tag: C-Myc/DDK

Predicted MW: 24.5 kDa

Concentration: >0.05 µg/µL as determined by microplate BCA method

Purity: > 80% as determined by SDS-PAGE and Coomassie blue staining

Buffer: 25 mM Tris-HCl, 100 mM glycine, pH 7.3, 10% glycerol

Preparation: Recombinant protein was captured through anti-DDK affinity column followed by conventional chromatography steps.

Note: For testing in cell culture applications, please filter before use. Note that you may experience some loss of protein during the filtration process.

Storage: Store at -80°C.

Stability: Stable for 12 months from the date of receipt of the product under proper storage and handling conditions. Avoid repeated freeze-thaw cycles.

RefSeq: [NP_001898](#)

Locus ID: 1506

UniProt ID: [P40313](#), [A0A024R6Z5](#)



[View online »](#)

RefSeq Size: 1197

Cytogenetics: 16q22.1

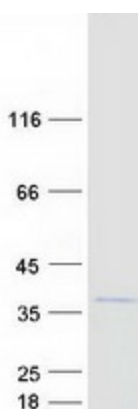
RefSeq ORF: 792

Synonyms: CTRL1

Summary: This gene encodes a serine-type endopeptidase with chymotrypsin- and elastase-2-like activities. The gene encoding this zymogen is expressed specifically in the pancreas and likely functions as a digestive enzyme. [provided by RefSeq, Sep 2016]

Protein Families: Druggable Genome, Protease

Product images:



Coomassie blue staining of purified CTRL protein (Cat# [TP309072]). The protein was produced from HEK293T cells transfected with CTRL cDNA clone (Cat# [RC209072]) using MegaTran 2.0 (Cat# [TT210002]).