

## Product datasheet for **TP309072**

### Chymotrypsin like protease (CTRL) (NM\_001907) Human Recombinant Protein

#### Product data:

**Product Type:** Recombinant Proteins

**Description:** Recombinant protein of human chymotrypsin-like (CTRL), 20 µg

**Species:** Human

**Expression Host:** HEK293T

**Expression cDNA Clone  
or AA Sequence:** >RC209072 protein sequence  
**Red**=Cloning site **Green**=Tags(s)

MLLLSLTSLVLLGSSWGCIPAIKPALSFSQRIVNGENAVLGSWPWQVSLQDSSGFHFCGGSLISQSWV  
VTAAHCVNSPGRHFVVLGEYDRSSNAEPLQVLSVSRAITHPSWNSTTMNNDVTLKLASPAQYTTTRISPV  
CLASSNEALTEGLTCVTTGWGRLSGVGNVTPAHLQQVALPLVTVNQCRQYWSSITDSMICAGGAGASSC  
QGDSGGPLVCQKGNTWVLIGIVSWGTKNCNVRAPAVYTRVSKFSTWINQVIAYN

**TRTRPLEQKLISEEDLAANDILDYKDDDDKV**

**Tag:** C-Myc/DDK

**Predicted MW:** 24.5 kDa

**Concentration:** >0.05 µg/µL as determined by microplate BCA method

**Purity:** > 80% as determined by SDS-PAGE and Coomassie blue staining

**Buffer:** 25 mM Tris-HCl, 100 mM glycine, pH 7.3, 10% glycerol

**Preparation:** Recombinant protein was captured through anti-DDK affinity column followed by conventional chromatography steps.

**Note:** For testing in cell culture applications, please filter before use. Note that you may experience some loss of protein during the filtration process.

**Storage:** Store at -80°C.

**Stability:** Stable for 12 months from the date of receipt of the product under proper storage and handling conditions. Avoid repeated freeze-thaw cycles.

**RefSeq:** [NP\\_001898](#)

**Locus ID:** 1506

**UniProt ID:** [P40313](#), [A0A024R6Z5](#)



[View online »](#)

RefSeq Size: 1197

Cytogenetics: 16q22.1

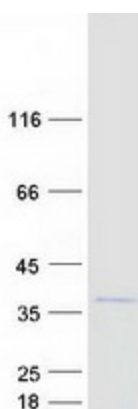
RefSeq ORF: 792

Synonyms: CTRL1

**Summary:** This gene encodes a serine-type endopeptidase with chymotrypsin- and elastase-2-like activities. The gene encoding this zymogen is expressed specifically in the pancreas and likely functions as a digestive enzyme. [provided by RefSeq, Sep 2016]

**Protein Families:** Druggable Genome, Protease

### Product images:



Coomassie blue staining of purified CTRL protein (Cat# TP309072). The protein was produced from HEK293T cells transfected with CTRL cDNA clone (Cat# [RC209072]) using MegaTran 2.0 (Cat# [TT210002]).