

## Product datasheet for **TP309064M**

### EXTL1 (NM\_004455) Human Recombinant Protein

#### Product data:

**Product Type:** Recombinant Proteins

**Description:** Recombinant protein of human exostoses (multiple)-like 1 (EXTL1), 100 µg

**Species:** Human

**Expression Host:** HEK293T

**Expression cDNA Clone** >RC209064 protein sequence

**or AA Sequence:** **Red**=Cloning site **Green**=Tags(s)

MQSWRRRKSLWLALSASWLLLVLGGFSLRLALPPRPRPGASQGWPRWLDAELLQSFSPGELPEDAVS  
PPQAPHGGSCNWESCFDTSKCRGDGLKVFVYPVAVGTISETHRRILASIEGSRFYTFSPAGACLLLLSLD  
AQTGECSSMPLQWNRGRNHLVLRHPAPCPRTFQLGQAMVAEASPTVDSFRPGFDVALPFLPEAHPLRGG  
APGQLRQHSPQPGVALLALEEERGGWRTADTGSSACPWDGRCEQDPGPGQTQRQETLPNATFCLISGHRP  
EAASRFLQALQAGCIPVLLSPRWELPFSEVIDWTKAAIVADERLPLQVLAALQEMSPARVLALRQQTQFL  
WDAYFSSVEKVIHTTLEVIQDRIFGTSAHPSLLWNSPPGALLALSTFSTSPQDFPFYLLQQGSRPEGRFS  
ALIWVGPPGQPPLKLIQAVAGSQHCAQILVLWSNERPLPSRWPETAVPLTVIDGHRKVSDRFYPISTIRT  
DAILSLDARSSLSTSEVDFAFVWQSFPERMVGFLTSSHFVDEAHGGWGYAERTNEFSMVLTTAAFYHR  
YYHTLFTHSLPKALRTLADAEPTCVDVLMNFIVAAVTKLPPKVPYQKQRQEAAPLAPGGPGPRPKPPAP  
APDCINQIAAAFHMPDLLSSRLRLDPVLFKDPVSVQRKKYRSLEKP

**TRTRPLEQKLISEEDLAANDILDYKDDDDKV**

**Tag:** C-Myc/DDK

**Predicted MW:** 74.5 kDa

**Concentration:** >0.05 µg/µL as determined by microplate BCA method

**Purity:** > 80% as determined by SDS-PAGE and Coomassie blue staining

**Buffer:** 25 mM Tris-HCl, 100 mM glycine, pH 7.3, 10% glycerol

**Preparation:** Recombinant protein was captured through anti-DDK affinity column followed by conventional chromatography steps.

**Note:** For testing in cell culture applications, please filter before use. Note that you may experience some loss of protein during the filtration process.

**Storage:** Store at -80°C.



[View online »](#)

**Stability:** Stable for 12 months from the date of receipt of the product under proper storage and handling conditions. Avoid repeated freeze-thaw cycles.

**RefSeq:** [NP\\_004446](#)

**Locus ID:** 2134

**UniProt ID:** [Q92935](#)

**RefSeq Size:** 4021

**Cytogenetics:** 1p36.11

**RefSeq ORF:** 2028

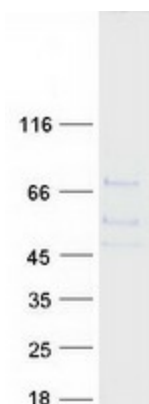
**Synonyms:** EXTL

**Summary:** This gene is a member of the multiple exostoses (EXT) family of glycosyltransferases, which function in the chain polymerization of heparan sulfate and heparin. The encoded protein harbors alpha 1,4- N-acetylglucosaminyltransferase activity, and is involved in chain elongation of heparan sulfate and possibly heparin. [provided by RefSeq, Jul 2008]

**Protein Families:** Transmembrane

**Protein Pathways:** Heparan sulfate biosynthesis, Metabolic pathways

### Product images:



Coomassie blue staining of purified EXTL1 protein (Cat# [TP309064]). The protein was produced from HEK293T cells transfected with EXTL1 cDNA clone (Cat# [RC209064]) using MegaTran 2.0 (Cat# [TT210002]).