

Product datasheet for TP309060M

SCML2 (NM_006089) Human Recombinant Protein

Product data:

Product Type:	Recombinant Proteins
Description:	Recombinant protein of human sex comb on midleg-like 2 (Drosophila) (SCML2), 100 µg
Species:	Human
Expression Host:	HEK293T
Expression cDNA Clone or AA Sequence:	>RC209060 protein sequence Red=Cloning site Green=Tags(s)

MGQTVNEDSMDVKKENQEKTQSSSTSSVQRDDFHWEYLYKETGSISAPSECFRQSQIPPVNDKFKVGMKLE
ARDPRNATSVCIATVIGITGARLRLRLDGSNDRNDFWRLVDSPDIQPVGTCEKEGDLQPPPLGYQMNTSS
WPMFLLKTLNGSEMASATLFKKEPPKPLNFKVGMKLEAIDKKNPYLICPATIGDVKGDEVHITFDGWS
GAFDYWCKYDSRDIFPAGWCRLTGDVLQPPGTSVPIVKNIKTESPSEASQHSMSQSPQKTTLLIPTQQV
RRSSRIKPPGPTAVPKRSSSVKNITPRKKGPNSSGKKEKPLVICSTSAASLKSLLTRDRGMLYKDVASGPC
KIVMSTVCVYVNHGNGFPHLDPKRIQLPDHFGPGPVNWLRRIVQACVDCALETKTVMFYGLKPDNRGG
EVITASFDGETHSIQLPPVNSASFALRFLFNCHSLQCDNLLSSQPFSSSRGHTHSSAEHDKNQSAKEDV
TERQSTKRSPQQTVPYVPLSPKLPKTKEYASEGEPLFAGGSAIPKEENLSEDSKSSSLNSGNYLNPACR
NPMYIHTSVSQDFRSVPGTTSSPLVGDISPSSPHEVKFQMQRKSEAPSYIAVPDPSVLKQGFSGKDPST
WSVDEVIQFMKHTDPQISGPLADLFRQHEIDGKALFLLKSDVMMKYMGLKLGPAKLCYYIEKLEKYGYS

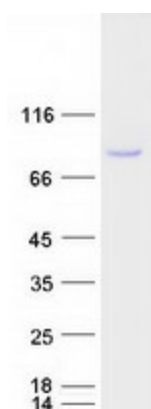
TRTRPLEQKLISEEDLAANDILDYKDDDDKV

Tag:	C-Myc/DDK
Predicted MW:	77.1 kDa
Concentration:	>0.05 µg/µL as determined by microplate BCA method
Purity:	> 80% as determined by SDS-PAGE and Coomassie blue staining
Buffer:	25 mM Tris-HCl, 100 mM glycine, pH 7.3, 10% glycerol
Preparation:	Recombinant protein was captured through anti-DDK affinity column followed by conventional chromatography steps.
Note:	For testing in cell culture applications, please filter before use. Note that you may experience some loss of protein during the filtration process.
Storage:	Store at -80°C.



[View online »](#)

Stability:	Stable for 12 months from the date of receipt of the product under proper storage and handling conditions. Avoid repeated freeze-thaw cycles.
RefSeq:	<u>NP_006080</u>
Locus ID:	10389
UniProt ID:	<u>Q9UQR0</u>
RefSeq Size:	4212
Cytogenetics:	Xp22.13
RefSeq ORF:	2100
Summary:	This gene encodes a member of the Polycomb group proteins. These proteins form the Polycomb repressive complexes which are involved in transcriptional repression. The encoded protein binds histone peptides that are monomethylated at lysine residues and may be involved in regulating homeotic gene expression during development. [provided by RefSeq, Jun 2010]
Protein Families:	Transcription Factors

Product images:

Coomassie blue staining of purified SCML2 protein (Cat# [TP309060]). The protein was produced from HEK293T cells transfected with SCML2 cDNA clone (Cat# [RC209060]) using MegaTran 2.0 (Cat# [TT210002]).