

Product datasheet for TP309056M

SEC23IP (NM_007190) Human Recombinant Protein

Product data:

Product Type:	Recombinant Proteins
Description:	Recombinant protein of human SEC23 interacting protein (SEC23IP), 100 µg
Species:	Human
Expression Host:	HEK293T
Expression cDNA Clone or AA Sequence:	>RC209056 protein sequence Red =Cloning site Green =Tags(s)

MAERKPNGGSGGASTSSSGTNLLFSSSATEFSFNVPFIPVTQASASPASLLLPGEDSTDVGEEDSFLGQT
SIHTSAPQTFYFSQVSSSSDPFGNIGQSPLTTAATSVGQSGFPKPLTALPFTTGSQDVSNFSPSISKA
QPGAPSSLMGINSYLPSPSSLPPSYFGNQPPGIPQPGYNPYRHTPGSSRANPYIAPPQLQQCQTPGPP
AHPPPSGPPVQMYQMPPGSLPPVSSVQSPAQQQVPARPGAPSVQVPSFLLQNQYEPVQPHWFYCKEVE
YKQLWMPFSVFDLNLLEIYNSVQPDPEVVLGTDGGRYDVYLYDRIRKAAYWEEPAEVRRTWFKYKGD
TDSRFIPYTEEFSEKLEAEYKKAATTNQHRRLEFSPGETIVMHNPKVIVQFQPSSVPDEWGTTQDGQTR
PRVVKRGIDDNLDEIPDGEMPQVDHLVFWHIGIGPVCDLRFRSIECVDDFRVVSLLKLRTHFKKSLDDG
KVSVEFLPVHWHSSLGGDATGVDRNIKITLPSIGRFRHFTNETLLDILFYNSPTYCQTIVEKVGMEIN
HLHALFMSRNPDKGGVSVAGHSLGLLFDILSNQKDLNLSKCPGLAVANGVVKQLHFQEKQMPEEPK
LTLDESYDLVVENKEVLTQETLEALSLEYFSTFEKEKIDMESLLMCTVDDLKEMGIPLGPRKKIANFV
EHKAAKLLKKAASEKKAVAATSTKGQEQAQTKDMASLPSESNPKRKLPGVACVSSVCVNYESFEVGAG
QVSVAYNSLDFEPEIFFALGSIAMFLTIRGVDRIDENYSLPTCKGFFNIYHPLDPVAYRLEPMIVPDL
LKAVLIPHKKGRKRLHLELKELSRMGSDLKQGFISLKSAAWQTLNEFARAHTSSTQLQEELEKVANQIK
EEEEKQVVEAEKVVEPDFSKDEDYLGKVGMLNGGRRIDYVLQEKPIESFNEYLFALQSHLCYWESEDTA
LLLLKEIYRTMNISPEQPQH

TRTRPLEQKLISEEDLAANDILDYKDDDDKV

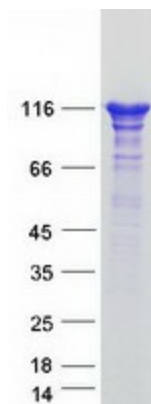
Tag:	C-Myc/DDK
Predicted MW:	110.9 kDa
Concentration:	>0.05 µg/µL as determined by microplate BCA method
Purity:	> 80% as determined by SDS-PAGE and Coomassie blue staining
Buffer:	25 mM Tris-HCl, 100 mM glycine, pH 7.3, 10% glycerol



[View online »](#)

Preparation:	Recombinant protein was captured through anti-DDK affinity column followed by conventional chromatography steps.
Note:	For testing in cell culture applications, please filter before use. Note that you may experience some loss of protein during the filtration process.
Storage:	Store at -80°C.
Stability:	Stable for 12 months from the date of receipt of the product under proper storage and handling conditions. Avoid repeated freeze-thaw cycles.
RefSeq:	NP_009121
Locus ID:	11196
UniProt ID:	Q9Y6Y8
RefSeq Size:	7306
Cytogenetics:	10q26.11-q26.12
RefSeq ORF:	3000
Synonyms:	iPLA1beta; MSTP053; P125; P125A
Summary:	This gene encodes a member of the phosphatidic acid preferring-phospholipase A1 family. The encoded protein is localized to endoplasmic reticulum exit sites and plays a critical role in ER-Golgi transport as part of the multimeric coat protein II complex. An orthologous gene in frogs is required for normal neural crest cell development, suggesting that this gene may play a role in Waardenburg syndrome neural crest defects. Alternatively spliced transcript variants have been observed for this gene. [provided by RefSeq, Feb 2011]

Product images:



Coomassie blue staining of purified SEC23IP protein (Cat# [TP309056]). The protein was produced from HEK293T cells transfected with SEC23IP cDNA clone (Cat# [RC209056]) using MegaTran 2.0 (Cat# [TT210002]).