

Product datasheet for **TP309056**

SEC23IP (NM_007190) Human Recombinant Protein

Product data:

| | |
|---------------------------------------|--|
| Product Type: | Recombinant Proteins |
| Description: | Recombinant protein of human SEC23 interacting protein (SEC23IP), 20 µg |
| Species: | Human |
| Expression Host: | HEK293T |
| Expression cDNA Clone or AA Sequence: | >RC209056 protein sequence Red =Cloning site Green =Tags(s) |

MAERKPNGGSGGASTSSSGTNLLFSSSATEFSFNVPFIPVTQASASPASLLLPGEDSTDVGEEDSFLGQT
SIHTSAPQTFYFSQVSSSSDPFGNIGQSPLTTAATSVGQSGFPKPLTALPFTTGSQDVSNFSPSISKA
QPGAPPSSLMGINSYLPSPSSLPPSYFGNQPPGIPQPGYNPYRHTPGSSRANPYIAPPQLQQCQTPGPP
AHPPPSGPPVQMYQMPPGSLPPVSSVQSPAQQQVPARPGAPSVQVPSFLLQNQYEPVQPHWFYCKEVE
YKQLWMPFSVFDLNLLEEIYNSVQPDPEVVLGTDGGRYDVYLYDRIRKAAYWEEPEAEVRRCTWFYKGD
TDSRFIPYTEEFSEKLEAEYKKAATTNQHRRLEFSPGETIVMHNPKVIVQFQPSSVPDEWGTTQDGQTR
PRVVKRGIDDNLDEIPDGEMPQVDHLVFWHIGIGPVCDLRFRSIECVDDFRVVSLLKLRTHFKKSLDDG
KVSVEFLPVHWHSSLGGDATGVDRNIKITLPSIGRFRHFTNETLLDILFYNSPTYCQTIVEKVGMEIN
HLHALFMSRNPDKGGVSVAGHSLGLLFDILSNQKDLNLSKCPGLAVANGVVKQLHFQEKQMPEEPK
LTLDESVDLVENKEVLTQETLEALSLEYFSTFEKEKIDMESLLMCTVDDLKEMGIPLGPRKKIANFV
EHKAAKLLKAAASEKKAVAATSTKGQEQSAQTKDMASLPSESNEPKRKLPGVACVSSVCVNYESFEVGAG
QVSVAYNSLDFEPEIFFALGSPIAMFLTIRGVDRIDENYSLPTCKGFFNIYHPLDPVAYRLEPMIVPDL
LKAVLIPHKKRRLHLELKESSLRMGSDLKQGFISLKS AWQTLNEFARAHTSSTQLQEELEKVANQIK
EEEEKQVVEAEKVVEPDFSKDEDYLGKVGMLNGGRRIDYVLQEKPIESFNEYLFALQSHLCYWESEDTA
LLLLKEIYRTMNISPEQPQH

TRTRPLEQKLISEEDLAANDILDYKDDDDKV

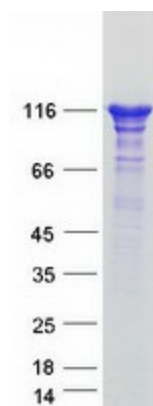
| | |
|----------------|---|
| Tag: | C-Myc/DDK |
| Predicted MW: | 110.9 kDa |
| Concentration: | >0.05 µg/µL as determined by microplate BCA method |
| Purity: | > 80% as determined by SDS-PAGE and Coomassie blue staining |
| Buffer: | 25 mM Tris-HCl, 100 mM glycine, pH 7.3, 10% glycerol |



[View online »](#)

| | |
|----------------------|---|
| Preparation: | Recombinant protein was captured through anti-DDK affinity column followed by conventional chromatography steps. |
| Note: | For testing in cell culture applications, please filter before use. Note that you may experience some loss of protein during the filtration process. |
| Storage: | Store at -80°C. |
| Stability: | Stable for 12 months from the date of receipt of the product under proper storage and handling conditions. Avoid repeated freeze-thaw cycles. |
| RefSeq: | NP_009121 |
| Locus ID: | 11196 |
| UniProt ID: | Q9Y6Y8 |
| RefSeq Size: | 7306 |
| Cytogenetics: | 10q26.11-q26.12 |
| RefSeq ORF: | 3000 |
| Synonyms: | iPLA1beta; MSTP053; P125; P125A |
| Summary: | This gene encodes a member of the phosphatidic acid preferring-phospholipase A1 family. The encoded protein is localized to endoplasmic reticulum exit sites and plays a critical role in ER-Golgi transport as part of the multimeric coat protein II complex. An orthologous gene in frogs is required for normal neural crest cell development, suggesting that this gene may play a role in Waardenburg syndrome neural crest defects. Alternatively spliced transcript variants have been observed for this gene. [provided by RefSeq, Feb 2011] |

Product images:



Coomassie blue staining of purified SEC23IP protein (Cat# TP309056). The protein was produced from HEK293T cells transfected with SEC23IP cDNA clone (Cat# [RC209056]) using MegaTran 2.0 (Cat# [TT210002]).