

Product datasheet for **TP309047**

Host cell factor C1 regulator 1 (HCFC1R1) (NM_017885) Human Recombinant Protein

Product data:

Product Type:	Recombinant Proteins
Description:	Recombinant protein of human host cell factor C1 regulator 1 (XPO1 dependent) (HCFC1R1), transcript variant 1, 20 µg
Species:	Human
Expression Host:	HEK293T
Expression cDNA Clone or AA Sequence:	>RC209047 protein sequence Red =Cloning site Green =Tags(s)
	MILQQPLQRGPGQGAQRLPRAALGVTWGLDASSPLRGAVPMSTKRRLEEEQEPLRKQFLSEENMATHFS Q LSLHNDHPYCSPPMTFSPALPPLRSPCELLWRYPGSLIPEALRLLRLGDTSPPPYPATPAGDIMEL
	TRTRPLEQKLISEEDLAANDILDYKDDDDKV
Tag:	C-Myc/DDK
Predicted MW:	15.1 kDa
Concentration:	>0.05 µg/µL as determined by microplate BCA method
Purity:	> 80% as determined by SDS-PAGE and Coomassie blue staining
Buffer:	25 mM Tris-HCl, 100 mM glycine, pH 7.3, 10% glycerol
Preparation:	Recombinant protein was captured through anti-DDK affinity column followed by conventional chromatography steps.
Note:	For testing in cell culture applications, please filter before use. Note that you may experience some loss of protein during the filtration process.
Storage:	Store at -80°C.
Stability:	Stable for 12 months from the date of receipt of the product under proper storage and handling conditions. Avoid repeated freeze-thaw cycles.
RefSeq:	NP_060355
Locus ID:	54985
UniProt ID:	Q9NWW0



[View online »](#)

RefSeq Size: 1023

Cytogenetics: 16p13.3

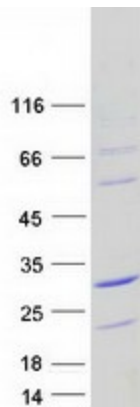
RefSeq ORF: 414

Synonyms: HPIP

Summary: Regulates HCFC1 activity by modulating its subcellular localization. Overexpression of HCFC1R1 leads to accumulation of HCFC1 in the cytoplasm. HCFC1R1-mediated export may provide the pool of cytoplasmic HCFC1 required for import of virion-derived VP16 into the nucleus.[UniProtKB/Swiss-Prot Function]

Protein Families: Druggable Genome

Product images:



Coomassie blue staining of purified HCFC1R1 protein (Cat# TP309047). The protein was produced from HEK293T cells transfected with HCFC1R1 cDNA clone (Cat# [RC209047]) using MegaTran 2.0 (Cat# [TT210002]).