

## Product datasheet for **TP309035**

### **RBP7 (NM\_052960) Human Recombinant Protein**

#### Product data:

Product Type:	Recombinant Proteins
Description:	Recombinant protein of human retinol binding protein 7, cellular (RBP7), 20 µg
Species:	Human
Expression Host:	HEK293T
Expression cDNA Clone or AA Sequence:	>RC209035 protein sequence <b>Red</b> =Cloning site <b>Green</b> =Tags(s)
	MPADLSGTWLLSSDNFEGYMLALGIDFATRKIALLKPQKVIEQNGDSFTIHTNSSLRNYFVKFKVGEE FDEDNRGLDNRKCKSLVIWDNDRLTCIQKGEKKNRGWTHWIEGDKLHLEMFCEGQVCKQTFQRA  <b>TRTRPLEQKLISEEDLAANDILDYKDDDDKV</b>
Tag:	C-Myc/DDK
Predicted MW:	15.4 kDa
Concentration:	>0.05 µg/µL as determined by microplate BCA method
Purity:	> 80% as determined by SDS-PAGE and Coomassie blue staining
Buffer:	25 mM Tris-HCl, 100 mM glycine, pH 7.3, 10% glycerol
Preparation:	Recombinant protein was captured through anti-DDK affinity column followed by conventional chromatography steps.
Note:	For testing in cell culture applications, please filter before use. Note that you may experience some loss of protein during the filtration process.
Storage:	Store at -80°C.
Stability:	Stable for 12 months from the date of receipt of the product under proper storage and handling conditions. Avoid repeated freeze-thaw cycles.
RefSeq:	<a href="#">NP_443192</a>
Locus ID:	116362
UniProt ID:	<a href="#">Q96R05</a>
RefSeq Size:	704
Cytogenetics:	1p36.22



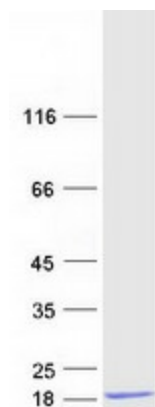
[View online »](#)

RefSeq ORF: 402

Synonyms: CRABP4; CRBP4; CRBPIV

Summary: The protein encoded by this gene is a member of the cellular retinol-binding protein (CRBP) family, whose members are required for vitamin A stability and metabolism. The encoded protein binds all-trans-retinol and is structurally similar to other CRBPs; however, it has a lower binding affinity for retinol than other CRBPs. [provided by RefSeq, Aug 2016]

### Product images:



Coomassie blue staining of purified RBP7 protein (Cat# TP309035). The protein was produced from HEK293T cells transfected with RBP7 cDNA clone (Cat# [RC209035]) using MegaTran 2.0 (Cat# [TT210002]).