

Product datasheet for TP309034M

DHODH (NM_001361) Human Recombinant Protein

Product data:

Product Type:	Recombinant Proteins
Description:	Recombinant protein of human dihydroorotate dehydrogenase (DHODH), nuclear gene encoding mitochondrial protein, 100 µg
Species:	Human
Expression Host:	HEK293T
Expression cDNA Clone or AA Sequence:	>RC209034 protein sequence Red =Cloning site Green =Tags(s)

MAWRHLKKRAQDAVILGGGGLLFASYLMATGDERFYAEHLMPTLQGLLDPESAHRLAVRFTSLGLLPRA
RFQSDMLEVRVLGHKFRNPVGIAAGFDKHEAVDGLYKMGFGFVEIGSVTPKPKQEGNPRPRVFRLLPEDQ
AVINRYGFNSHGLSVVEHRLRARQKQAKLTEDGLPLGVNLGKNKTSVDAEDYAEGVRVLGPLADYLWV
NVSSPNTAGLRSLQGKAELRRLTKVLQERDGLRRVHRPAVLVKIAPDLTSQDKEDIASVVKELGIDGLI
VTNTTVSRPAGLQGALRSETGGLSGKPLRDLSTQTIREMYALTQGRVPIIGVGGVSSGQDALEKIRAGAS
LVQLYTALTFWGPVVGKVKRELEALLKEQGGVTDAGADHRR

TRTRPLEQKLISEEDLAANDILDYKDDDDKV

Tag:	C-Myc/DDK
Predicted MW:	41.6 kDa
Concentration:	>0.1 µg/µL as determined by microplate BCA method
Purity:	> 80% as determined by SDS-PAGE and Coomassie blue staining
Buffer:	25 mM Tris-HCl, 100 mM glycine, pH 7.3, 10% glycerol
Bioactivity:	Enzyme activity (PMID: 27641501) Enzyme activity (PMID: 28196676)
Preparation:	Recombinant protein was captured through anti-DDK affinity column followed by conventional chromatography steps.
Note:	For testing in cell culture applications, please filter before use. Note that you may experience some loss of protein during the filtration process.
Storage:	Store at -80°C.



[View online »](#)

Stability: Stable for 12 months from the date of receipt of the product under proper storage and handling conditions. Avoid repeated freeze-thaw cycles.

RefSeq: [NP_001352](#)

Locus ID: 1723

UniProt ID: [Q02127](#)

RefSeq Size: 2438

Cytogenetics: 16q22.2

RefSeq ORF: 1185

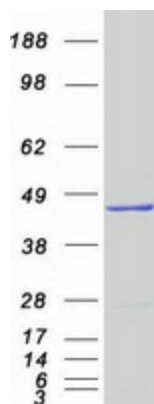
Synonyms: DHodehase; POADS; URA1

Summary: The protein encoded by this gene catalyzes the fourth enzymatic step, the ubiquinone-mediated oxidation of dihydroorotate to orotate, in de novo pyrimidine biosynthesis. This protein is a mitochondrial protein located on the outer surface of the inner mitochondrial membrane. [provided by RefSeq, Jul 2008]

Protein Families: Druggable Genome, Transmembrane

Protein Pathways: Metabolic pathways, Pyrimidine metabolism

Product images:



Coomassie blue staining of purified DHODH protein (Cat# [TP309034]). The protein was produced from HEK293T cells transfected with DHODH cDNA clone (Cat# [RC209034]) using MegaTran 2.0 (Cat# [TT210002]).