

## Product datasheet for TP309028

### Estrogen Related Receptor alpha (ESRRA) (NM\_004451) Human Recombinant Protein

#### Product data:

Product Type:	Recombinant Proteins
Description:	Purified recombinant protein of Homo sapiens estrogen-related receptor alpha (ESRRA), 20 µg
Species:	Human
Expression Host:	HEK293T
Expression cDNA Clone or AA Sequence:	>RC209028 representing NM_004451 Red=Cloning site Green=Tags(s)
	<p>MSSQVVGIEPLYIKAEPASPDSPKGSSETETETPPVALAPGPAPTRCLPGHKEEDGEGAGPGEQGGGKLV LSSLPKRLCLVCGDVASGYHYGVASCEACKAFFKRTIQGSIYSCPASNECEITKRRRKACQACRFTKCL RVGMLKEGVRLDRVRGGRQKYKRRPEVDPLPFPGPFPAGPLAVAGGPRKTAAPVNALVSHLLVVEPEKLV AMPDPAGPDGHLPAVATLCDLFDREIVTISWAKSIPGFSSLSLSDQMSVLQSVWMEVLVLGVAQRSPLP QDELAFEDLVLDEEGARAAGLGELGAALLQLVRRQLALRLEREYVLLKALALANSDSVHIEDAEAVEQ LREALHEALLEYEAGRAGPGGGAERRRAGRLLLTPLLRQTAGKVLAHFYGVKLEGKVPMMHKLFLFEMLEA MMD</p> <p>TRTRPLEQKLISEEDLAANDILDYKDDDDKV</p>
Tag:	C-Myc/DDK
Predicted MW:	45.3 kDa
Concentration:	>0.05 µg/µL as determined by microplate BCA method
Purity:	> 80% as determined by SDS-PAGE and Coomassie blue staining
Buffer:	25 mM Tris-HCl, 100 mM glycine, pH 7.3, 10% glycerol
Preparation:	Recombinant protein was captured through anti-DDK affinity column followed by conventional chromatography steps.
Note:	For testing in cell culture applications, please filter before use. Note that you may experience some loss of protein during the filtration process.
Storage:	Store at -80°C.
Stability:	Stable for 12 months from the date of receipt of the product under proper storage and handling conditions. Avoid repeated freeze-thaw cycles.
RefSeq:	<a href="#">NP_004442</a>



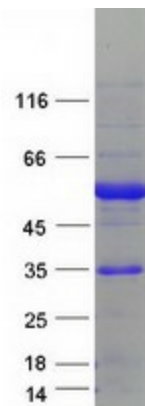
[View online »](#)

Locus ID:	2101
UniProt ID:	<a href="#">P11474</a> , <a href="#">Q569H8</a>
RefSeq Size:	2284
Cytogenetics:	11q13.1
RefSeq ORF:	1269
Synonyms:	ERR1; ERRa; ERRalpha; ESRL1; NR3B1

**Summary:** The protein encoded by this gene is a nuclear receptor that is most closely related to the estrogen receptor. This protein acts as a site-specific transcription factor and interacts with members of the PGC-1 family of transcription cofactors to regulate the expression of most genes involved in cellular energy production as well as in the process of mitochondrial biogenesis. A processed pseudogene of ESRRA is located on chromosome 13q12.1. [provided by RefSeq, Jun 2019]

**Protein Families:** Druggable Genome, Nuclear Hormone Receptor, Transcription Factors

### Product images:



Coomassie blue staining of purified ESRRA protein (Cat# TP309028). The protein was produced from HEK293T cells transfected with ESRRA cDNA clone (Cat# [RC209028]) using MegaTran 2.0 (Cat# [TT210002]).