

Product datasheet for TP309015L

DUS1L (NM_022156) Human Recombinant Protein

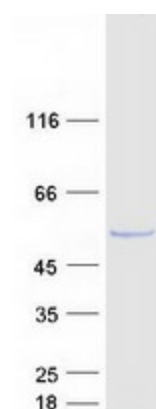
Product data:

Product Type:	Recombinant Proteins
Description:	Recombinant protein of human dihydrouridine synthase 1-like (<i>S. cerevisiae</i>) (DUS1L), 1 mg
Species:	Human
Expression Host:	HEK293T
Expression cDNA Clone or AA Sequence:	>RC209015 protein sequence Red =Cloning site Green =Tags(s) MPKLQGFEFWSRTLRGARHVVAPMVDQSELAWRLLSRRHGAQLCYTPMLHAQVFVRDANYRKENLYCEVC PEDRPLIVQFCANDPEVVFQAALLAQDYCDAIDLNLGCPQMIAKRGHYGAFLQDEWDLLQRMILLAHEKL SVPVTCKIRVFPEIDKTVRYAQMLEKAGCQLLTVHGRTKEQKGPLSGAASWEHIKAVRKAVAIPVFANGN IQCLQDVERCLRDTGVQGVMSAEGNLHNPALFEGRSPAVWELAEYLDIVREHPCPLSYVRAHLFKLWHH TLQVHQELREELAKVKTLEGIAAVSQELKLRCEEISRQEGAKPTGDLPFHWICQPYIRPGPREGSKEKA GARSKRALEEEEGTEVLSKNKQKKQLRNPHKTFDPSLKPKYAKCDQCGNPKGNRCVFSLCRGCKCKRAS KETADCPGHGLLFKTKLEKSLAWKEAQPELQEPQPAAPGTPGGFSEVMGSALA TR TRPLEQKLISEEDLAANDILDYKDDDDKV
Tag:	C-Myc/DDK
Predicted MW:	53 kDa
Concentration:	>0.05 µg/µL as determined by microplate BCA method
Purity:	> 80% as determined by SDS-PAGE and Coomassie blue staining
Buffer:	25 mM Tris-HCl, 100 mM glycine, pH 7.3, 10% glycerol
Preparation:	Recombinant protein was captured through anti-DDK affinity column followed by conventional chromatography steps.
Note:	For testing in cell culture applications, please filter before use. Note that you may experience some loss of protein during the filtration process.
Storage:	Store at -80°C.
Stability:	Stable for 12 months from the date of receipt of the product under proper storage and handling conditions. Avoid repeated freeze-thaw cycles.


[View online »](#)

RefSeq:	<u>NP_071439</u>
Locus ID:	64118
UniProt ID:	<u>Q6P1R4</u>
RefSeq Size:	1904
Cytogenetics:	17q25.3
RefSeq ORF:	1419
Synonyms:	DUS1; PP3111
Summary:	Catalyzes the synthesis of dihydrouridine, a modified base found in the D-loop of most tRNAs.[UniProtKB/Swiss-Prot Function]

Product images:



Coomassie blue staining of purified DUS1L protein (Cat# [TP309015]). The protein was produced from HEK293T cells transfected with DUS1L cDNA clone (Cat# [RC209015]) using MegaTran 2.0 (Cat# [TT210002]).