

Product datasheet for **TP309009M**

PM20D1 (NM_152491) Human Recombinant Protein

Product data:

Product Type:	Recombinant Proteins
Description:	Recombinant protein of human peptidase M20 domain containing 1 (PM20D1), 100 µg
Species:	Human
Expression Host:	HEK293T
Expression cDNA Clone or AA Sequence:	>RC209009 protein sequence Red =Cloning site Green =Tags(s)
	<p>MAQRCVCVLALVAMLLLVFPTVSRSMGPRSGEHQRASRIPSQFSKEERVAMKEALKGAIQIPTVTFSSSEK SNTTALAEFGKYIHKVFPTVWSTFSFIQHEVVEEYSHLFTIQGSDPSLQPYLLMAHFDVWPAPEEGWEVPP FSGLERDGVYIGWGTLDKNSVMALLQALELLLRKYIPRRSFFISLGHDEESSGTGAQRISALLQSRGV QLAFIVDEGGFILDFFIPNFKPIALIAVSEKGSMLMLQVNMSTGHSSAPPKETSIGILAAA VSRLEQT PMPIIFGSGTVTVLQQLANEFPPVNIILSNPWLFEPLISRFMERNPLTNAIIRTTTALTIFKAGVKFN VIPPVAQATVNFRIHPGQTVQEVLELTKNIVADNRVQFHVLSAFDPLVSPSDDKALGYQLLRQTVQSVF PEVNITAPVTSIGNTDSRFFTNLTTGIYRFYPIYIQPEDFKRIHGVNEKISVQAYETQVKFIFELIQNAD TDQEPVSHLHKL</p> <p>SGPTRTRPLEQKLISEEDLAANDILDYKDDDDKV</p>
Tag:	C-Myc/DDK
Predicted MW:	55.6 kDa
Concentration:	>0.05 µg/µL as determined by microplate BCA method
Purity:	> 80% as determined by SDS-PAGE and Coomassie blue staining
Buffer:	25 mM Tris-HCl, 100 mM glycine, pH 7.3, 10% glycerol
Preparation:	Recombinant protein was captured through anti-DDK affinity column followed by conventional chromatography steps.
Note:	For testing in cell culture applications, please filter before use. Note that you may experience some loss of protein during the filtration process.
Storage:	Store at -80°C.
Stability:	Stable for 12 months from the date of receipt of the product under proper storage and handling conditions. Avoid repeated freeze-thaw cycles.



[View online »](#)

RefSeq: [NP_689704](#)

Locus ID: 148811

UniProt ID: [Q6GTS8](#)

RefSeq Size: 2200

Cytogenetics: 1q32.1

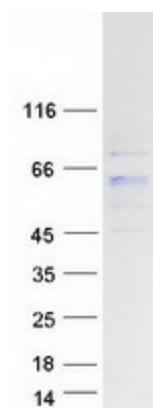
RefSeq ORF: 1506

Synonyms: Cps1

Summary: Bidirectional N-fatty-acyl amino acid synthase/hydrolase that regulates the production of N-fatty-acyl amino acids. These metabolites are endogenous chemical uncouplers of mitochondrial respiration. In an UCP1-independent manner, maybe through interaction with mitochondrial transporters, they promote proton leakage into the mitochondrial matrix. Thereby, this secreted protein may indirectly regulate the bodily dissipation of chemical energy as heat through thermogenic respiration.[UniProtKB/Swiss-Prot Function]

Protein Families: Transmembrane

Product images:



Coomassie blue staining of purified PM20D1 protein (Cat# [TP309009]). The protein was produced from HEK293T cells transfected with PM20D1 cDNA clone (Cat# [RC209009]) using MegaTran 2.0 (Cat# [TT210002]).