

Product datasheet for **TP309007M**

ATP6V0D2 (NM_152565) Human Recombinant Protein

Product data:

Product Type:	Recombinant Proteins
Description:	Recombinant protein of human ATPase, H ⁺ transporting, lysosomal 38kDa, V0 subunit d2 (ATP6V0D2), 100 µg
Species:	Human
Expression Host:	HEK293T
Expression cDNA Clone or AA Sequence:	>RC209007 protein sequence Red =Cloning site Green =Tags(s)

MLEGAELYFNVDHGYLEGLVRGCKASLLTQQDYINLVQCETLEDLKIHLQTTDYGNFLANHTNPLTVSKI
DTEMRKRLCGEFYFRNHSLEPLSTFLTYMTCSYIMIDNVILLMNGALQKKSVEILGKCHPLGRFTEMEA
VNIAETPSDLFNAILIETPLAPFFQDCMSENALDELNIELLRNKLYKSYLEAFYKFCCKNHGDVTAEVMCP
ILEFEADRRAFIITLNSFGTELSKEDRETLYPTFGKLYPEGLRLLAQAEDFDQMKNVADHYGVYKPLFEA
VGGSGGKTLEDVFYEREVQMNVLAFNRQFHYGVFYAVYVKLKEQEIRNIVWIAECISQRHRTKINSYIPIL

TRTRPLEQKLISEEDLAANDILDYKDDDDKV

Tag:	C-Myc/DDK
Predicted MW:	40.2 kDa
Concentration:	>0.05 µg/µL as determined by microplate BCA method
Purity:	> 80% as determined by SDS-PAGE and Coomassie blue staining
Buffer:	25 mM Tris-HCl, 100 mM glycine, pH 7.3, 10% glycerol
Preparation:	Recombinant protein was captured through anti-DDK affinity column followed by conventional chromatography steps.
Note:	For testing in cell culture applications, please filter before use. Note that you may experience some loss of protein during the filtration process.
Storage:	Store at -80°C.
Stability:	Stable for 12 months from the date of receipt of the product under proper storage and handling conditions. Avoid repeated freeze-thaw cycles.
RefSeq:	NP_689778
Locus ID:	245972



[View online »](#)

UniProt ID: [Q8N8Y2](#), [A0A024R991](#)

RefSeq Size: 2370

Cytogenetics: 8q21.3

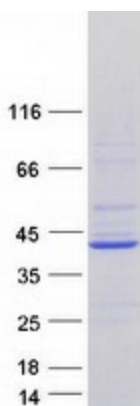
RefSeq ORF: 1050

Synonyms: ATP6D2; VMA6

Summary: Subunit of the integral membrane V0 complex of vacuolar ATPase. Vacuolar ATPase is responsible for acidifying a variety of intracellular compartments in eukaryotic cells, thus providing most of the energy required for transport processes in the vacuolar system. May play a role in coupling of proton transport and ATP hydrolysis (By similarity).[UniProtKB/Swiss-Prot Function]

Protein Pathways: Epithelial cell signaling in Helicobacter pylori infection, Lysosome, Metabolic pathways, Oxidative phosphorylation, Vibrio cholerae infection

Product images:



Coomassie blue staining of purified ATP6V0D2 protein (Cat# [TP309007]). The protein was produced from HEK293T cells transfected with ATP6V0D2 cDNA clone (Cat# [RC209007]) using MegaTran 2.0 (Cat# [TT210002]).