

## Product datasheet for **TP309001**

### PSMB9 (NM\_002800) Human Recombinant Protein

#### Product data:

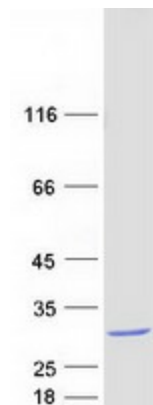
Product Type:	Recombinant Proteins
Description:	Recombinant protein of human proteasome (prosome, macropain) subunit, beta type, 9 (large multifunctional peptidase 2) (PSMB9), transcript variant 1, 20 µg
Species:	Human
Expression Host:	HEK293T
Expression cDNA Clone or AA Sequence:	>RC209001 protein sequence <b>Red</b> =Cloning site <b>Green</b> =Tags(s)  MLRAGAPTGDLPRAGEVHTGTTIMAVEFDGGVWVGSDSRVSAGEAVNVRVFDKLSPLHERIYCALSGSAA DAQAVADMAAYQLELHGIELEPPPLVLAANVVRNISYKYREDLSAHLMVAGWDQREGGQVYGTLLGML T RQPFAIGGSGSTFIYGYVDAAYKPGMSPEECRRFTTDAIALAMSRDGSSGGVIYLVITAAAGVDHRVILG NELPKFYDE  <b>TRTRPLEQKLISEEDLAANDILDYKDDDDKV</b>
Tag:	C-Myc/DDK
Predicted MW:	23.1 kDa
Concentration:	>0.05 µg/µL as determined by microplate BCA method
Purity:	> 80% as determined by SDS-PAGE and Coomassie blue staining
Buffer:	25 mM Tris-HCl, 100 mM glycine, pH 7.3, 10% glycerol
Preparation:	Recombinant protein was captured through anti-DDK affinity column followed by conventional chromatography steps.
Note:	For testing in cell culture applications, please filter before use. Note that you may experience some loss of protein during the filtration process.
Storage:	Store at -80°C.
Stability:	Stable for 12 months from the date of receipt of the product under proper storage and handling conditions. Avoid repeated freeze-thaw cycles.
RefSeq:	<u><a href="#">NP_002791</a></u>
Locus ID:	5698



[View online »](#)

UniProt ID:	<a href="#">P28065</a>
RefSeq Size:	1048
Cytogenetics:	6p21.32
RefSeq ORF:	657
Synonyms:	beta1i; LMP2; PRAAS3; PSMB6i; RING12
Summary:	<p>The proteasome is a multicatalytic proteinase complex with a highly ordered ring-shaped 20S core structure. The core structure is composed of 4 rings of 28 non-identical subunits; 2 rings are composed of 7 alpha subunits and 2 rings are composed of 7 beta subunits. Proteasomes are distributed throughout eukaryotic cells at a high concentration and cleave peptides in an ATP/ubiquitin-dependent process in a non-lysosomal pathway. An essential function of a modified proteasome, the immunoproteasome, is the processing of class I MHC peptides. This gene encodes a member of the proteasome B-type family, also known as the T1B family, that is a 20S core beta subunit. This gene is located in the class II region of the MHC (major histocompatibility complex). Expression of this gene is induced by gamma interferon and this gene product replaces catalytic subunit 1 (proteasome beta 6 subunit) in the immunoproteasome. Proteolytic processing is required to generate a mature subunit. [provided by RefSeq, Mar 2010]</p>
Protein Families:	Druggable Genome, Protease
Protein Pathways:	Proteasome

### Product images:



Coomassie blue staining of purified PSMB9 protein (Cat# TP309001). The protein was produced from HEK293T cells transfected with PSMB9 cDNA clone (Cat# [RC209001]) using MegaTran 2.0 (Cat# [TT210002]).