

## Product datasheet for TP308993L

### JMJD6 (NM\_015167) Human Recombinant Protein

#### Product data:

Product Type:	Recombinant Proteins
Description:	Recombinant protein of human jumonji domain containing 6 (JMJD6), transcript variant 2, 1 mg
Species:	Human
Expression Host:	HEK293T
Expression cDNA Clone or AA Sequence:	>RC208993 protein sequence <b>Red</b> =Cloning site <b>Green</b> =Tags(s)

MNHKSKKRIEAKRSARPELKDSLWTRHNYYESFSLSPAAVADNVERADALQLSVEEFVERYERPYKPV  
VLLNAQEGWSAQEKWTLERLKRKYRNQKFKCGEDNDGYSVKMKMKYIYEMESTRDDSPYIFDSSYGEH  
PKRRKLELDYKVPKFFTDLLFQYAGEKRRPPYRWFVMGPPRSGTGIHIDPLGTSAWNALVQGHKRWCLFP  
TSTPRELIKVTRDEGGNQQDEAITWFNVIYPRQLPTWPPEFKPLEILQKPGETVFPGGWWHVLNLDL  
TIAITQNFASSTNFPVWHKTVRGRPKLSRKWYRILKQEHPELAVLADSVLDLQESTGIASDSSSDSSSS  
SSSSSDSDSECESGSEGDGTVHRRKKRRTCSMVGNGDTSQDDCVSKERSSSR

**TRTRPLEQKLISEEDLAANDILDYKDDDDKV**

Tag:	C-Myc/DDK
Predicted MW:	46.3 kDa
Concentration:	>0.05 µg/µL as determined by microplate BCA method
Purity:	> 80% as determined by SDS-PAGE and Coomassie blue staining
Buffer:	25 mM Tris-HCl, 100 mM glycine, pH 7.3, 10% glycerol
Bioactivity:	Co-immunoprecipitation (PMID: <a href="#">28790175</a> )
Preparation:	Recombinant protein was captured through anti-DDK affinity column followed by conventional chromatography steps.
Note:	For testing in cell culture applications, please filter before use. Note that you may experience some loss of protein during the filtration process.
Storage:	Store at -80°C.
Stability:	Stable for 12 months from the date of receipt of the product under proper storage and handling conditions. Avoid repeated freeze-thaw cycles.



[View online »](#)

RefSeq: [NP\\_055982](#)

Locus ID: 23210

UniProt ID: [Q6NYC1](#)

RefSeq Size: 1834

Cytogenetics: 17q25.1

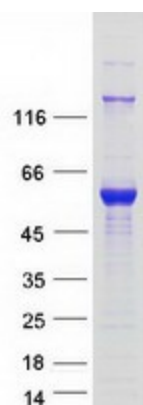
RefSeq ORF: 1209

Synonyms: PSR; PTDSR; PTDSR1

**Summary:** This gene encodes a nuclear protein with a JmjC domain. JmjC domain-containing proteins are predicted to function as protein hydroxylases or histone demethylases. This protein was first identified as a putative phosphatidylserine receptor involved in phagocytosis of apoptotic cells; however, subsequent studies have indicated that it does not directly function in the clearance of apoptotic cells, and questioned whether it is a true phosphatidylserine receptor. Multiple transcript variants encoding different isoforms have been found for this gene. [provided by RefSeq, Jul 2008]

**Protein Families:** Druggable Genome, ES Cell Differentiation/IPS

### Product images:



Coomassie blue staining of purified JMJD6 protein (Cat# [TP308993]). The protein was produced from HEK293T cells transfected with JMJD6 cDNA clone (Cat# [RC208993]) using MegaTran 2.0 (Cat# [TT210002]).