

Product datasheet for **TP308975M**

ICOS Ligand (ICOSLG) (NM_015259) Human Recombinant Protein

Product data:

Product Type:	Recombinant Proteins
Description:	Recombinant protein of human inducible T-cell co-stimulator ligand (ICOSLG), 100 µg
Species:	Human
Expression Host:	HEK293T
Expression cDNA Clone or AA Sequence:	>RC208975 protein sequence Red =Cloning site Green =Tags(s)

MRLGSPGLLFLFSSLRADTQEKEVRAMVGSDELSCACPEGSRFDLNDVYVYWQTSESKTVVYHIPQN
SSELENVDSRYRNRALMSPAGMLRGDFSLRFLFNVTQDEQKFHCLVLSQSLGFQEVLSVEVTLHVAANFSV
PVVSAPHSPSQDELFTFTSINGYPRPNVYWINKTDNSLLDQALQNDTVFLNMRGLYDVVSVLRIARTPS
VNIGCCCIENVLLQQLTVGSQTGNDIGERDKITENPVSTGEKNAATWSILAVLCLLVVVAIGWVCRDR
CLQHSYAGAWAVSPETELTGHV

TRTRPLEQKLISEEDLAANDILDYKDDDDKV

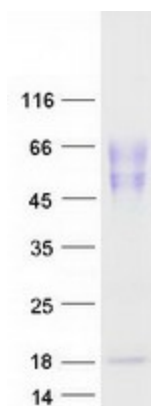
Tag:	C-Myc/DDK
Predicted MW:	33.2 kDa
Concentration:	>0.05 µg/µL as determined by microplate BCA method
Purity:	> 80% as determined by SDS-PAGE and Coomassie blue staining
Buffer:	25 mM Tris-HCl, 100 mM glycine, pH 7.3, 10% glycerol
Preparation:	Recombinant protein was captured through anti-DDK affinity column followed by conventional chromatography steps.
Note:	For testing in cell culture applications, please filter before use. Note that you may experience some loss of protein during the filtration process.
Storage:	Store at -80°C.
Stability:	Stable for 12 months from the date of receipt of the product under proper storage and handling conditions. Avoid repeated freeze-thaw cycles.
RefSeq:	NP_056074
Locus ID:	23308



[View online »](#)

UniProt ID:	O75144 , A0N0L8
RefSeq Size:	3320
Cytogenetics:	21q22.3
RefSeq ORF:	906
Synonyms:	B7-H2; B7h; B7H2; B7RP-1; B7RP1; CD275; GL50; ICOS-L; ICOSL; LICOS
Summary:	Ligand for the T-cell-specific cell surface receptor ICOS. Acts as a costimulatory signal for T-cell proliferation and cytokine secretion; induces also B-cell proliferation and differentiation into plasma cells. Could play an important role in mediating local tissue responses to inflammatory conditions, as well as in modulating the secondary immune response by co-stimulating memory T-cell function (By similarity).[UniProtKB/Swiss-Prot Function]
Protein Families:	Transmembrane
Protein Pathways:	Cell adhesion molecules (CAMs)

Product images:



Coomassie blue staining of purified ICOSLG protein (Cat# [TP308975]). The protein was produced from HEK293T cells transfected with ICOSLG cDNA clone (Cat# [RC208975]) using MegaTran 2.0 (Cat# [TT210002]).