

## Product datasheet for **TP308959L**

### **LRRC57 (NM\_153260) Human Recombinant Protein**

#### **Product data:**

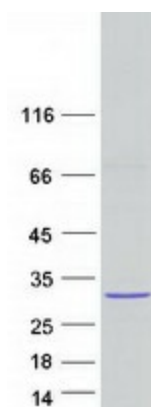
Product Type:	Recombinant Proteins
Description:	Recombinant protein of human leucine rich repeat containing 57 (LRRC57), 1 mg
Species:	Human
Expression Host:	HEK293T
Expression cDNA Clone or AA Sequence:	>RC208959 representing NM_153260 <b>Red</b> =Cloning site <b>Green</b> =Tags(s)  MGNSALRAHVETAQKTGVFQLKDRGLTEFPADLQKLTSNLRITDLSNNKIESLPPLIGKFTLLKSLSLN NNKLTVLPDEICNLKKLETLSLNNHLRELPSTFGQLSALKTSLSGNQLGALPPQLCSLRHLDVMDLSK NQIRSIPDSVGLQVIELNLNQNQISQISVKISCCPRLKILRLEENCLELSMLPQSILSDSQICLLAVEG NLFEIKKRELEGYDKYMERFTATKKKFA  <b>TRTRPLEQKLISEEDLAANDILDYKDDDDKV</b>
Tag:	C-Myc/DDK
Predicted MW:	26.6 kDa
Concentration:	>0.05 µg/µL as determined by microplate BCA method
Purity:	> 80% as determined by SDS-PAGE and Coomassie blue staining
Buffer:	25 mM Tris-HCl, 100 mM glycine, pH 7.3, 10% glycerol
Preparation:	Recombinant protein was captured through anti-DDK affinity column followed by conventional chromatography steps.
Note:	For testing in cell culture applications, please filter before use. Note that you may experience some loss of protein during the filtration process.
Storage:	Store at -80°C.
Stability:	Stable for 12 months from the date of receipt of the product under proper storage and handling conditions. Avoid repeated freeze-thaw cycles.
RefSeq:	<a href="#">NP_694992</a>
Locus ID:	255252
UniProt ID:	<a href="#">Q8N9N7</a> , <a href="#">A0A024R9M3</a>



[View online »](#)

RefSeq Size: 2647  
Cytogenetics: 15q15.2  
RefSeq ORF: 717  
Protein Families: Druggable Genome

### Product images:



Coomassie blue staining of purified LRRC57 protein (Cat# [TP308959]). The protein was produced from HEK293T cells transfected with LRRC57 cDNA clone (Cat# [RC208959]) using MegaTran 2.0 (Cat# [TT210002]).