

## Product datasheet for **TP308949M**

### Adenine Nucleotide Translocator 2 (SLC25A5) (NM\_001152) Human Recombinant Protein

#### Product data:

**Product Type:** Recombinant Proteins

**Description:** Recombinant protein of human solute carrier family 25 (mitochondrial carrier; adenine nucleotide translocator), member 5 (SLC25A5), nuclear gene encoding mitochondrial protein, 100 µg

**Species:** Human

**Expression Host:** HEK293T

**Expression cDNA Clone or AA Sequence:** >RC208949 protein sequence  
**Red**=Cloning site **Green**=Tags(s)

MTDAAVSFAKDFLAGGVAAAISKTAVAPIERVKLLLQVQHASKQITADKQYKGIIDCVWRIPKEQGVLSF  
WRGNLANVIRYFPTQALNFAFKDKYKQIFLGGVDKRTQFWRYFAGNLASGGAAGATSLCFVYPLDFARTR  
LAADVKGAGAERFRGLGDCLVKIYKSDGKGLYQGFNVSVQGGIIYRAAYFGIYDTAKGMLPDPKNTHI  
VISWMIAQTVTAVAGLTSYPFDTVRRRMMMMSGRKGTDIMYTGTLDCWRKIARDEGGKAFFKGAWSNVLR  
GMGGAFVLVLYDEIKKYT

**TRTRPLEQKLISEEDLAANDILDYKDDDDKV**

**Tag:** C-Myc/DDK

**Predicted MW:** 32.7 kDa

**Concentration:** >0.05 µg/µL as determined by microplate BCA method

**Purity:** > 80% as determined by SDS-PAGE and Coomassie blue staining

**Buffer:** 25 mM Tris-HCl, 100 mM glycine, pH 7.3, 10% glycerol

**Bioactivity:** Pull-down assay (PMID: [28368390](#))

**Preparation:** Recombinant protein was captured through anti-DDK affinity column followed by conventional chromatography steps.

**Note:** For testing in cell culture applications, please filter before use. Note that you may experience some loss of protein during the filtration process.

**Storage:** Store at -80°C.

**Stability:** Stable for 12 months from the date of receipt of the product under proper storage and handling conditions. Avoid repeated freeze-thaw cycles.



[View online »](#)

RefSeq: [NP\\_001143](#)

Locus ID: 292

UniProt ID: [P05141](#), [Q6NVCO](#)

RefSeq Size: 1351

Cytogenetics: Xq24

RefSeq ORF: 894

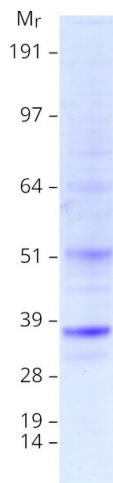
Synonyms: 2F1; AAC2; ANT2; T2; T3

**Summary:** This gene is a member of the mitochondrial carrier subfamily of solute carrier protein genes. The product of this gene functions as a gated pore that translocates ADP from the cytoplasm into the mitochondrial matrix and ATP from the mitochondrial matrix into the cytoplasm. The protein forms a homodimer embedded in the inner mitochondria membrane. Suppressed expression of this gene has been shown to induce apoptosis and inhibit tumor growth. The human genome contains several non-transcribed pseudogenes of this gene.[provided by RefSeq, Jun 2013]

**Protein Families:** Druggable Genome, Transmembrane

**Protein Pathways:** Calcium signaling pathway, Huntington's disease, Parkinson's disease

**Product images:**



Coomassie blue staining of purified SLC25A5 protein (Cat# [TP308949]). The protein was produced from HEK293T cells transfected with SLC25A5 cDNA clone (Cat# [RC208949]) using MegaTran 2.0 (Cat# [TT210002]).