

Product datasheet for **TP308949L**

Adenine Nucleotide Translocator 2 (SLC25A5) (NM_001152) Human Recombinant Protein

Product data:

Product Type:	Recombinant Proteins
Description:	Recombinant protein of human solute carrier family 25 (mitochondrial carrier; adenine nucleotide translocator), member 5 (SLC25A5), nuclear gene encoding mitochondrial protein, 1 mg
Species:	Human
Expression Host:	HEK293T
Expression cDNA Clone or AA Sequence:	>RC208949 protein sequence Red =Cloning site Green =Tags(s)

MTDAAVSFAKDFLAGGVAAAISKTAVAPIERVKLLLQVQHASKQITADKQYKGIIDCVWRIPKEQGVLSF
WRGNLANVIRYFPTQALNFAFKDKYKQIFLGGVDKRTQFWRYFAGNLSGGAAGATSLCFVYPLDFARTR
LAADVKGAGAERFRGLGDCLVKIYKSDGKGLYQGFNVSVQGGIIYRAAYFGIYDTAKGMLPDPKNTHI
VISWMIAQTVTAVAGLTSYPFDTVRRRMMMMSGRKGTDIMYTGTLDCWRKIARDEGGKAFFKGAWSNVLR
GMGGAFVLVLYDEIKKYT

TRTRPLEQKLISEEDLAANDILDYKDDDDKV

Tag:	C-Myc/DDK
Predicted MW:	32.7 kDa
Concentration:	>0.05 µg/µL as determined by microplate BCA method
Purity:	> 80% as determined by SDS-PAGE and Coomassie blue staining
Buffer:	25 mM Tris-HCl, 100 mM glycine, pH 7.3, 10% glycerol
Bioactivity:	Pull-down assay (PMID: 28368390)
Preparation:	Recombinant protein was captured through anti-DDK affinity column followed by conventional chromatography steps.
Note:	For testing in cell culture applications, please filter before use. Note that you may experience some loss of protein during the filtration process.
Storage:	Store at -80°C.
Stability:	Stable for 12 months from the date of receipt of the product under proper storage and handling conditions. Avoid repeated freeze-thaw cycles.



[View online »](#)

RefSeq: [NP_001143](#)

Locus ID: 292

UniProt ID: [P05141](#), [Q6NVCO](#)

RefSeq Size: 1351

Cytogenetics: Xq24

RefSeq ORF: 894

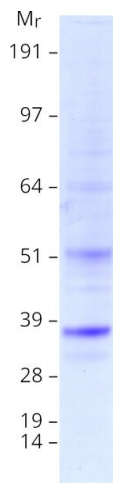
Synonyms: 2F1; AAC2; ANT2; T2; T3

Summary: This gene is a member of the mitochondrial carrier subfamily of solute carrier protein genes. The product of this gene functions as a gated pore that translocates ADP from the cytoplasm into the mitochondrial matrix and ATP from the mitochondrial matrix into the cytoplasm. The protein forms a homodimer embedded in the inner mitochondria membrane. Suppressed expression of this gene has been shown to induce apoptosis and inhibit tumor growth. The human genome contains several non-transcribed pseudogenes of this gene.[provided by RefSeq, Jun 2013]

Protein Families: Druggable Genome, Transmembrane

Protein Pathways: Calcium signaling pathway, Huntington's disease, Parkinson's disease

Product images:



Coomassie blue staining of purified SLC25A5 protein (Cat# [TP308949]). The protein was produced from HEK293T cells transfected with SLC25A5 cDNA clone (Cat# [RC208949]) using MegaTran 2.0 (Cat# [TT210002]).