

## Product datasheet for **TP308937M**

### CD146 (MCAM) (NM\_006500) Human Recombinant Protein

#### Product data:

**Product Type:** Recombinant Proteins  
**Description:** Recombinant protein of human melanoma cell adhesion molecule (MCAM)  
**Species:** Human  
**Expression Host:** HEK293T  
**Expression cDNA Clone or AA Sequence:** >RC208937 representing NM\_006500  
**Red**=Cloning site **Green**=Tags(s)

MGLPRLVCAFLLAACCCCPRVAGVPGAEQPAPELVEVEVGSTALLKCGLSQSQGNLSHVDWFSVHKEKR  
TLIFRVRQGGQSEPGEYEQRLSLQDRGATLALTQVTPQDERIFLCQGKRPRSQEYRIQLRVYKAPEEPN  
IQVNPLGIPVNSKEPEEVATCVGRNGYPIPVQVIWYKNGRPLKEEKNRVHIQSSQTVESSGLYLQSLKA  
QLVKEDKDAQFYCELNYRLPSGNHMKESREVTVPVFYPTKVVLEVEPVGMLKEGDRVEIRCLADGNPPP  
HFSISKQNPSTREAEETNDNGVLVLEPARKEHSGRYECQGLDLDTMISLLSEPQELLVNYVSDVRVSP  
AAPERQEGSSLTCEAESSQDLEFQWLREETGQVLERGPVLQLHDLKREAGGGYRCVASVPSIPGLNRT  
QLVNVAIFGPPWMAFKERKVVKENMVLNLSCEASGHRPTISWNVNGTASEQDQDPQRVLSTLNLVLT  
ELLETVECTASNDLGKNTSILFLELVNLTTLTPDSNTTGLSTSTASPHTRANSTSTERKLPEPESRGV  
VIVAVIVCILVAVLAVLAVLYFLYKKGKLPARRSGKQKITLPPSRKSELVVEVKSDDLPEEMGLLQGS  
KRAPGDQGEKYIDLRH

**TRTRPLEQKLISEEDLAANDILDYKDDDDKV**

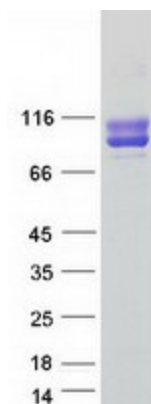
**Tag:** C-Myc/DDK  
**Predicted MW:** 71.4 kDa  
**Concentration:** >50 ug/mL as determined by microplate BCA method  
**Purity:** > 80% as determined by SDS-PAGE and Coomassie blue staining  
**Buffer:** 25 mM Tris.HCl, pH 7.3, 100 mM glycine, 10% glycerol  
**Preparation:** Recombinant protein was captured through anti-DDK affinity column followed by conventional chromatography steps.  
**Applications:** Cell culture: For culture applications, please filter before use. Note that you may experience some loss of protein during the filtration process.  
**Storage:** Store at -80°C.



[View online »](#)

<b>Stability:</b>	Stable for 12 months from the date of receipt of the product under proper storage and handling conditions. Avoid repeated freeze-thaw cycles.
<b>RefSeq:</b>	<a href="#">NP_006491</a>
<b>Locus ID:</b>	4162
<b>UniProt ID:</b>	<a href="#">P43121</a> , <a href="#">A0A024R3I5</a>
<b>RefSeq Size:</b>	3332
<b>Cytogenetics:</b>	11q23.3
<b>RefSeq ORF:</b>	1938
<b>Synonyms:</b>	CD146; HEMCAM; MelCAM; METCAM; MUC18
<b>Summary:</b>	Plays a role in cell adhesion, and in cohesion of the endothelial monolayer at intercellular junctions in vascular tissue. Its expression may allow melanoma cells to interact with cellular elements of the vascular system, thereby enhancing hematogeneous tumor spread. Could be an adhesion molecule active in neural crest cells during embryonic development. Acts as surface receptor that triggers tyrosine phosphorylation of FYN and PTK2/FAK1, and a transient increase in the intracellular calcium concentration.[UniProtKB/Swiss-Prot Function]
<b>Protein Families:</b>	Druggable Genome, ES Cell Differentiation/IPS, Transmembrane

### Product images:



Coomassie blue staining of purified MCAM protein (Cat# [TP308937]). The protein was produced from HEK293T cells transfected with MCAM cDNA clone (Cat# [RC208937]) using MegaTran 2.0 (Cat# [TT210002]).