

Product datasheet for **TP308937L**

CD146 (MCAM) (NM_006500) Human Recombinant Protein

Product data:

Product Type:	Recombinant Proteins
Description:	Recombinant protein of human melanoma cell adhesion molecule (MCAM), 1 mg
Species:	Human
Expression Host:	HEK293T
Expression cDNA Clone or AA Sequence:	>RC208937 representing NM_006500 Red=Cloning site Green=Tags(s)

MGLPRLVCAFLLAACCCCPRVAGVPGAEQPAPELVEVEVGSTALLKCGLSQSQGNLSHVDWFSVHKEKR
TLIFRVRQGQSQSEPGEYEQRLSLQDRGATLALTQVTPQDERIFLCQGKRPRSQEYRIQLRVYKAPEEPN
IQVNPLGIPVNSKEPEEVATCVGRNGYPIQVIWYKNGRPLKEEKNRVHIQSSQTVESSGLYTLQSILKA
QLVKEDKDAQFYCELNYRLPSGNHMKESREVTVPVFYPTKVVLEVEPVGMLKEGDRVEIRCLADGNPPP
HFSISKQNPSTREAEETNDNGVLVLEPARKEHSGRYECQGLDLDTMISLLSEPQELLVNYVSDVRVSP
AAPERQEGSSLTCEAESSQDLEFQWLREETGQVLERGPVLQLHDLKREAGGGYRCVASVPSIPGLNRT
QLVNVAIFGPPWMAFKERKVVWKENMVLNLSCEASGHRPTISWNVNGTASEQDQDPQRVLSTLNLVLT
ELLETVECTASNDLGKNTSILFLELVNLTTLTPDSNTTGLSTSTASPHTRANSTSTERKLPEPESRGV
VIVAVIVCILVAVLAVLAVLYFLYKKGKLPARRSGKQEITLPPSRKSELVVEVKSDDLPEEMGLLQGS
KRAPGDQGEKYIDLRH

TRTRPLEQKLISEEDLAANDILDYKDDDDKV

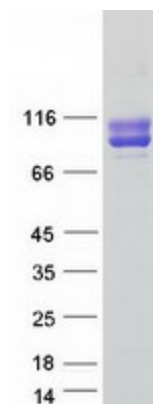
Tag:	C-Myc/DDK
Predicted MW:	71.4 kDa
Concentration:	>0.05 µg/µL as determined by microplate BCA method
Purity:	> 80% as determined by SDS-PAGE and Coomassie blue staining
Buffer:	25 mM Tris-HCl, 100 mM glycine, pH 7.3, 10% glycerol
Preparation:	Recombinant protein was captured through anti-DDK affinity column followed by conventional chromatography steps.
Note:	For testing in cell culture applications, please filter before use. Note that you may experience some loss of protein during the filtration process.
Storage:	Store at -80°C.



[View online »](#)

Stability:	Stable for 12 months from the date of receipt of the product under proper storage and handling conditions. Avoid repeated freeze-thaw cycles.
RefSeq:	NP_006491
Locus ID:	4162
UniProt ID:	P43121 , A0A024R3I5
RefSeq Size:	3332
Cytogenetics:	11q23.3
RefSeq ORF:	1938
Synonyms:	CD146; HEMCAM; MeICAM; METCAM; MUC18
Summary:	Plays a role in cell adhesion, and in cohesion of the endothelial monolayer at intercellular junctions in vascular tissue. Its expression may allow melanoma cells to interact with cellular elements of the vascular system, thereby enhancing hematogeneous tumor spread. Could be an adhesion molecule active in neural crest cells during embryonic development. Acts as surface receptor that triggers tyrosine phosphorylation of FYN and PTK2/FAK1, and a transient increase in the intracellular calcium concentration.[UniProtKB/Swiss-Prot Function]
Protein Families:	Druggable Genome, ES Cell Differentiation/IPS, Transmembrane

Product images:



Coomassie blue staining of purified MCAM protein (Cat# [TP308937]). The protein was produced from HEK293T cells transfected with MCAM cDNA clone (Cat# [RC208937]) using MegaTran 2.0 (Cat# [TT210002]).