

Product datasheet for **TP308926L**

CUEDC1 (NM_017949) Human Recombinant Protein

Product data:

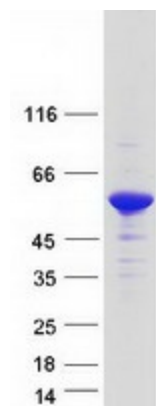
Product Type:	Recombinant Proteins
Description:	Recombinant protein of human CUE domain containing 1 (CUEDC1), 1 mg
Species:	Human
Expression Host:	HEK293T
Expression cDNA Clone or AA Sequence:	>RC208926 protein sequence Red =Cloning site Green =Tags(s)
	<p>MTSLFRRSSSGSGGGGTAGARGGGGGTAAPQELNNSRPARQVRRLEFNQAMDDFKTMFPNMDYDIIEC VL RANS GAVDATIDQLLQMNLEGGGSSGGVYEDSSDSSEDSIPPEILERTLEPDSSDEEPPPVYSPPAYHMHV FDRPYPLAPPTPPPRIDALGSGAPTSQRRYRNWNPPLLGNLPDDFLRILPQQLDISIQGNAGGPKPGSGEG CPPAMAGPGPGDQESRWKQYLEDERIALFLQNEEFMKELQRNRDFFLLALERDRLKYESQKSKSSSVAVGN DFGFSSPVPGTGDANPAVSEDALFRDKLKHMGKSTRRKLFELARAFSEKTKMRKSKRKHLLKHQSLGAAA STANLLDDVEGHACDEDFRGRREQAPKVEEGLREGQ</p> <p>SGPTRTRPLEQKLISEEDLAANDILDYKDDDDKV</p>
Tag:	C-Myc/DDK
Predicted MW:	42.1 kDa
Concentration:	>0.05 µg/µL as determined by microplate BCA method
Purity:	> 80% as determined by SDS-PAGE and Coomassie blue staining
Buffer:	25 mM Tris-HCl, 100 mM glycine, pH 7.3, 10% glycerol
Preparation:	Recombinant protein was captured through anti-DDK affinity column followed by conventional chromatography steps.
Note:	For testing in cell culture applications, please filter before use. Note that you may experience some loss of protein during the filtration process.
Storage:	Store at -80°C.
Stability:	Stable for 12 months from the date of receipt of the product under proper storage and handling conditions. Avoid repeated freeze-thaw cycles.
RefSeq:	<u>NP_060419</u>



[View online »](#)

Locus ID: 404093
UniProt ID: Q9NWM3
RefSeq Size: 3638
Cytogenetics: 17q22
RefSeq ORF: 1158
Synonyms: DKFZp547L163; FLJ20739
Protein Families: Druggable Genome

Product images:



Coomassie blue staining of purified CUEDC1 protein (Cat# [TP308926]). The protein was produced from HEK293T cells transfected with CUEDC1 cDNA clone (Cat# [RC208926]) using MegaTran 2.0 (Cat# [TT210002]).