

## Product datasheet for **TP308926**

### CUEDC1 (NM\_017949) Human Recombinant Protein

#### Product data:

**Product Type:** Recombinant Proteins

**Description:** Recombinant protein of human CUE domain containing 1 (CUEDC1), 20 µg

**Species:** Human

**Expression Host:** HEK293T

**Expression cDNA Clone  
or AA Sequence:** >RC208926 protein sequence  
**Red**=Cloning site **Green**=Tags(s)

MTSLFRRSSSGSGGGGTAGARGGGGGTAAPQELNNSRPARQVRRLEFNQAMDDFKTMFPNMDYDIIIECVL  
RANSGAVDATIDQLLQMNLEGGGSSGGVYEDSSSEDSIPPEILERTLEPDSSEDEPPPVYSPAYHMHV  
FDRPYPLAPPTPPPRIDALGSGAPTSQRRYRNWNPNLLGNLPDDFLRILPQQLDSIQGNAGGPKPGSGEG  
CPPAMAGPGPGDQESRWKQYLEDERIALFLQNEEFMKELQRNRDFFLLALERDRLKYESQKSKSSSVAVGN  
DFGFSSPVPGTGDANPAVSEDALFRDKLKHMGKSTRRKLFEARAFSEKTKMRKSKRKHLLKHQSLGAAA  
STANLLDDVEGHACDEDFRGRRQEAPKVEEGLREGQ

**SGPTRTRPLEQKLISEEDLAANDILDYKDDDDKV**

**Tag:** C-Myc/DDK

**Predicted MW:** 42.1 kDa

**Concentration:** >0.05 µg/µL as determined by microplate BCA method

**Purity:** > 80% as determined by SDS-PAGE and Coomassie blue staining

**Buffer:** 25 mM Tris-HCl, 100 mM glycine, pH 7.3, 10% glycerol

**Preparation:** Recombinant protein was captured through anti-DDK affinity column followed by conventional chromatography steps.

**Note:** For testing in cell culture applications, please filter before use. Note that you may experience some loss of protein during the filtration process.

**Storage:** Store at -80°C.

**Stability:** Stable for 12 months from the date of receipt of the product under proper storage and handling conditions. Avoid repeated freeze-thaw cycles.

**RefSeq:** [NP\\_060419](#)

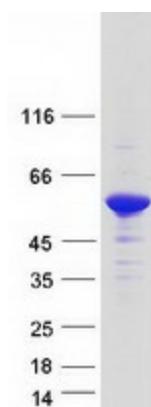
**Locus ID:** 404093



[View online »](#)

UniProt ID:	<a href="#">Q9NWM3</a>
RefSeq Size:	3638
Cytogenetics:	17q22
RefSeq ORF:	1158
Synonyms:	DKFZp547L163; FLJ20739
Protein Families:	Druggable Genome

### Product images:



Coomassie blue staining of purified CUEDC1 protein (Cat# TP308926). The protein was produced from HEK293T cells transfected with CUEDC1 cDNA clone (Cat# [RC208926]) using MegaTran 2.0 (Cat# [TT210002]).