

## Product datasheet for **TP308919L**

### ICAM3 (NM\_002162) Human Recombinant Protein

#### Product data:

Product Type:	Recombinant Proteins
Description:	Recombinant protein of human intercellular adhesion molecule 3 (ICAM3), 1 mg
Species:	Human
Expression Host:	HEK293T
Expression cDNA Clone or AA Sequence:	>RC208919 protein sequence <b>Red</b> =Cloning site <b>Green</b> =Tags(s)

MATMVPSVLWPRACWTLVCCLLTPGVQGGQEFLLRVEPQNPVLSAGGSLFVNCSTDCPSSEKIALETSL  
KELVASGMGWAAFNLSNVTGNSRILCSVYCNGSQITGSSNITVYRLPERVELAPLPWQPVGQNFNLRQC  
VEDGSPRTSLTVLLRWEEELSRQPAVEEPAEVTATVLASRDDHGAPFSCRELDMQPQGLGLFVNTSAP  
RQLRTFVLPVTPPRLVAPRFLEVETSWPVDCTLDGLFPASEAQVYLALGDQMLNATVMNHGDTLTATATA  
TARADQEGAREIVCNVTLGGERREARENLTVFSFLGPIVNLSEPTAHEGSTVTVSCMAGARVQVTLDGVP  
AAAPGQPAQLQLNATESDDGRSFFCSATLEVDGEFLHRNSSVQLRVLYGPKIDRATCPQHLKWKDKTRHV  
LQCQARGNPYPELRCLKEGSSREVPVGIPIFFVNVTHNGTYQCQASSSRGKYTLVWMDIEAGSSHFVPVF  
VAVLLTLGVTVLALMYVFREHQRSYHVVREESTYLPLTSMQPTEAMGEEPSRAE

**TRTRPLEQKLISEEDLAANDILDYKDDDDKV**

Tag:	C-Myc/DDK
Predicted MW:	56.4 kDa
Concentration:	>0.05 µg/µL as determined by microplate BCA method
Purity:	> 80% as determined by SDS-PAGE and Coomassie blue staining
Buffer:	25 mM Tris-HCl, 100 mM glycine, pH 7.3, 10% glycerol
Preparation:	Recombinant protein was captured through anti-DDK affinity column followed by conventional chromatography steps.
Note:	For testing in cell culture applications, please filter before use. Note that you may experience some loss of protein during the filtration process.
Storage:	Store at -80°C.
Stability:	Stable for 12 months from the date of receipt of the product under proper storage and handling conditions. Avoid repeated freeze-thaw cycles.



[View online >](#)

RefSeq: [NP\\_002153](#)

Locus ID: 3385

UniProt ID: [P32942](#), [A0A024R7C1](#)

RefSeq Size: 1796

Cytogenetics: 19p13.2

RefSeq ORF: 1641

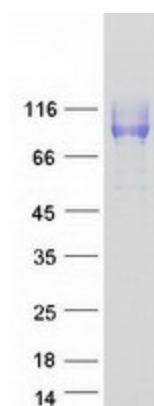
Synonyms: CD50; CDW50; ICAM-R

**Summary:** The protein encoded by this gene is a member of the intercellular adhesion molecule (ICAM) family. All ICAM proteins are type I transmembrane glycoproteins, contain 2-9 immunoglobulin-like C2-type domains, and bind to the leukocyte adhesion LFA-1 protein. This protein is constitutively and abundantly expressed by all leucocytes and may be the most important ligand for LFA-1 in the initiation of the immune response. It functions not only as an adhesion molecule, but also as a potent signalling molecule. Alternative splicing results in multiple transcript variants encoding different isoforms. [provided by RefSeq, Feb 2016]

**Protein Families:** ES Cell Differentiation/IPS, Transmembrane

**Protein Pathways:** Cell adhesion molecules (CAMs)

### Product images:



Coomassie blue staining of purified ICAM3 protein (Cat# [TP308919]). The protein was produced from HEK293T cells transfected with ICAM3 cDNA clone (Cat# [RC208919]) using MegaTran 2.0 (Cat# [TT210002]).