

## Product datasheet for **TP308914**

### PLVAP (NM\_031310) Human Recombinant Protein

#### Product data:

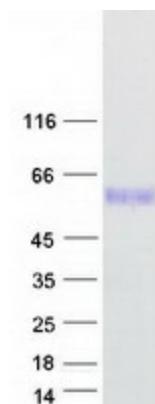
Product Type:	Recombinant Proteins
Description:	Recombinant protein of human plasmalemma vesicle associated protein (PLVAP), 20 µg
Species:	Human
Expression Host:	HEK293T
Expression cDNA Clone or AA Sequence:	>RC208914 representing NM_031310 <b>Red</b> =Cloning site <b>Green</b> =Tags(s)
	<p>MGLAMEHGGSYARAGGSSRGCWYYLRYFFLVSLIQFLIILGLVLFMVYGNVHVSTESNLQATERRAEGLYSPLLGLTASQSNLTKELNFTTRAKDAIMQMWLNARRDLDRINASFRQCQGDRVIYTNNQRYMAAILSEKQCRDQFKDMNKSCDALLFMLNQKVKLEVEIAKEKTICKDKESVLLNKRVAEEQLVECVKTRELQHQERQLAKEQLKQVQALCLPLDKDKFEMDLRNLWRDSIIPRSLDNLGYNLYHPLGSELASIRRACDHMPSLMSKVEELARSLRADIERVARENSDLQRQKLEAQQGLRASQEAQKQVEKEAQAREAKLQAECRQTQLALEEKAVLRKERDNLAKELEEKKREAEQLRMELAIRNSALDTCIKTKSQPMMPVSRPMGPVNPQPIDPASLEEFKRKILESQRPPAGIPVAPSSG</p> <p><b>SGPTRRRLEQKLISEEDLAANDILDYKDDDDKV</b></p>
Tag:	C-Myc/DDK
Predicted MW:	50.4 kDa
Concentration:	>0.05 µg/µL as determined by microplate BCA method
Purity:	> 80% as determined by SDS-PAGE and Coomassie blue staining
Buffer:	25 mM Tris-HCl, 100 mM glycine, pH 7.3, 10% glycerol
Preparation:	Recombinant protein was captured through anti-DDK affinity column followed by conventional chromatography steps.
Note:	For testing in cell culture applications, please filter before use. Note that you may experience some loss of protein during the filtration process.
Storage:	Store at -80°C.
Stability:	Stable for 12 months from the date of receipt of the product under proper storage and handling conditions. Avoid repeated freeze-thaw cycles.
RefSeq:	<u><a href="#">NP_112600</a></u>



[View online »](#)

Locus ID:	83483
UniProt ID:	<a href="#">Q9BX97</a>
RefSeq Size:	2317
Cytogenetics:	19p13.11
RefSeq ORF:	1326
Synonyms:	DIAR10; FELS; gp68; PV-1; PV1
Summary:	Endothelial cell-specific membrane protein involved in the formation of the diaphragms that bridge endothelial fenestrae. It is also required for the formation of stomata of caveolae and transendothelial channels. Functions in microvascular permeability, endothelial fenestrae contributing to the passage of water and solutes and regulating transcellular versus paracellular flow in different organs. Plays a specific role in embryonic development. [UniProtKB/Swiss-Prot Function]
Protein Families:	Transmembrane

### Product images:



Coomassie blue staining of purified PLVAP protein (Cat# TP308914). The protein was produced from HEK293T cells transfected with PLVAP cDNA clone (Cat# [RC208914]) using MegaTran 2.0 (Cat# [TT210002]).