

Product datasheet for **TP308908**

GRAP (NM_006613) Human Recombinant Protein

Product data:

Product Type: Recombinant Proteins

Description: Recombinant protein of human GRB2-related adaptor protein (GRAP), 20 µg

Species: Human

Expression Host: HEK293T

**Expression cDNA Clone
or AA Sequence:** >RC208908 protein sequence
Red=Cloning site **Green**=Tags(s)

MESVALYSFQATESDELA FNKGD TLKILN MEDDQN WYKAE LRGV EGFIPKNYIRVKPHPWYSGRISRQLA
EEILMKRNHLGAFLIRESESSPGFEFSVSVNYGDQVQHFKVLREASGKYFLWEEKFNLSLNELVDFYRTTTI
AKKRQIFLRDEEPLLKSPGACFAQAQDFSAQDPSQLSFRRGDIIEVLERPDPHWWWRGRSCGRVGFPPRS
YVQPVHL

TRTRPLEQKLISEEDLAANDILDYKDDDDKV

Tag: C-Myc/DDK

Predicted MW: 25.2 kDa

Concentration: >0.05 µg/µL as determined by microplate BCA method

Purity: > 80% as determined by SDS-PAGE and Coomassie blue staining

Buffer: 25 mM Tris-HCl, 100 mM glycine, pH 7.3, 10% glycerol

Preparation: Recombinant protein was captured through anti-DDK affinity column followed by conventional chromatography steps.

Note: For testing in cell culture applications, please filter before use. Note that you may experience some loss of protein during the filtration process.

Storage: Store at -80°C.

Stability: Stable for 12 months from the date of receipt of the product under proper storage and handling conditions. Avoid repeated freeze-thaw cycles.

RefSeq: [NP_006604](#)

Locus ID: 10750

UniProt ID: [Q13588](#)



[View online »](#)

RefSeq Size: 2089

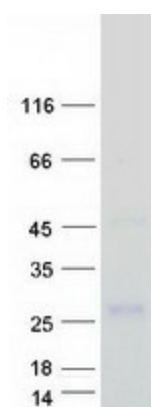
Cytogenetics: 17p11.2

RefSeq ORF: 651

Synonyms: DFNB114

Summary: This gene encodes a member of the GRB2/Sem5/Drk family and functions as a cytoplasmic signaling protein which contains an SH2 domain flanked by two SH3 domains. The SH2 domain interacts with ligand-activated receptors for stem cell factor and erythropoietin, and facilitates the formation of a stable complex with the BCR-ABL oncoprotein. This protein also associates with the Ras guanine nucleotide exchange factor SOS1 (son of sevenless homolog 1) through its N-terminal SH3 domain. In general, it couples signals from receptor and cytoplasmic tyrosine kinases to the Ras signaling pathway. [provided by RefSeq, Jul 2012]

Product images:



Coomassie blue staining of purified GRAP protein (Cat# TP308908). The protein was produced from HEK293T cells transfected with GRAP cDNA clone (Cat# [RC208908]) using MegaTran 2.0 (Cat# [TT210002]).