

Product datasheet for **TP308888**

Apolipoprotein CI (APOC1) (NM_001645) Human Recombinant Protein

Product data:

Product Type:	Recombinant Proteins
Description:	Recombinant protein of human apolipoprotein C-I (APOC1), 20 µg
Species:	Human
Expression Host:	HEK293T
Expression cDNA Clone or AA Sequence:	>RC208888 protein sequence Red=Cloning site Green=Tags(s)
	MRLFLSLPVLVVVLSIVLEGPAPAQGTPDVSSALDKLKEFGNTLEDKARELISRIKQSELSAKMREWFSE TFQKVKEKLIKIDS
	TRTRPLEQKLISEEDLAANDILDYKDDDDKV
Tag:	C-Myc/DDK
Predicted MW:	6.6 kDa
Concentration:	>0.05 µg/µL as determined by microplate BCA method
Purity:	> 80% as determined by SDS-PAGE and Coomassie blue staining
Buffer:	25 mM Tris-HCl, 100 mM glycine, pH 7.3, 10% glycerol
Preparation:	Recombinant protein was captured through anti-DDK affinity column followed by conventional chromatography steps.
Note:	For testing in cell culture applications, please filter before use. Note that you may experience some loss of protein during the filtration process.
Storage:	Store at -80°C.
Stability:	Stable for 12 months from the date of receipt of the product under proper storage and handling conditions. Avoid repeated freeze-thaw cycles.
RefSeq:	NP_001636
Locus ID:	341
UniProt ID:	P02654 , A0A024R0T8
RefSeq Size:	464
Cytogenetics:	19q13.32



[View online »](#)

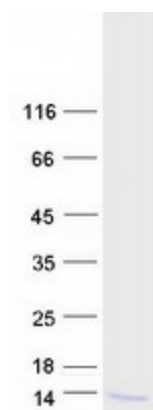
RefSeq ORF: 249

Synonyms: Apo-C1; apo-C1B; ApoC-I; apoC-1B

Summary: This gene encodes a member of the apolipoprotein C1 family. This gene is expressed primarily in the liver, and it is activated when monocytes differentiate into macrophages. The encoded protein plays a central role in high density lipoprotein (HDL) and very low density lipoprotein (VLDL) metabolism. This protein has also been shown to inhibit cholesteryl ester transfer protein in plasma. A pseudogene of this gene is located 4 kb downstream in the same orientation, on the same chromosome. This gene is mapped to chromosome 19, where it resides within a apolipoprotein gene cluster. Alternative splicing and the use of alternative promoters results in multiple transcript variants. [provided by RefSeq, Sep 2016]

Protein Families: Secreted Protein

Product images:



Coomassie blue staining of purified APOC1 protein (Cat# TP308888). The protein was produced from HEK293T cells transfected with APOC1 cDNA clone (Cat# [RC208888]) using MegaTran 2.0 (Cat# [TT210002]).