

## Product datasheet for **TP308876M**

### TXN (NM\_003329) Human Recombinant Protein

#### Product data:

Product Type: Recombinant Proteins

Description: Recombinant protein of human thioredoxin (TXN), 100 µg

Species: Human

Expression Host: HEK293T

Expression cDNA Clone  
or AA Sequence: >RC208876 protein sequence  
**Red**=Cloning site **Green**=Tags(s)

MVKQIESKTAFQEALDAAGDKLVVDFSATWCGPCKMIKPPFHSLSEKYSNVIFLEVDVDDCQDVASECE  
VKCMPTFQFFKKGQKVGEGSGANKEKLEATINELV

**TRTRPLEQKLISEEDLAANDILDYKDDDDKV**

Tag: C-Myc/DDK

Predicted MW: 11.6 kDa

Concentration: >0.05 µg/µL as determined by microplate BCA method

Purity: > 80% as determined by SDS-PAGE and Coomassie blue staining

Buffer: 25 mM Tris-HCl, 100 mM glycine, pH 7.3, 10% glycerol

Preparation: Recombinant protein was captured through anti-DDK affinity column followed by conventional chromatography steps.

Note: For testing in cell culture applications, please filter before use. Note that you may experience some loss of protein during the filtration process.

Storage: Store at -80°C.

Stability: Stable for 12 months from the date of receipt of the product under proper storage and handling conditions. Avoid repeated freeze-thaw cycles.

RefSeq: [NP\\_003320](#)

Locus ID: 7295

UniProt ID: [P10599](#), [H9ZYI2](#)

RefSeq Size: 886

Cytogenetics: 9q31.3



[View online »](#)

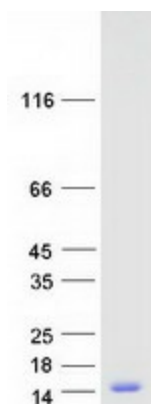
RefSeq ORF: 315

Synonyms: TRDX; TRX; TRX1; Trx80

**Summary:** The protein encoded by this gene acts as a homodimer and is involved in many redox reactions. The encoded protein is active in the reversible S-nitrosylation of cysteines in certain proteins, which is part of the response to intracellular nitric oxide. This protein is found in the cytoplasm. Two transcript variants encoding different isoforms have been found for this gene. [provided by RefSeq, Oct 2011]

**Protein Families:** Druggable Genome

### Product images:



Coomassie blue staining of purified TXN protein (Cat# [TP308876]). The protein was produced from HEK293T cells transfected with TXN cDNA clone (Cat# [RC208876]) using MegaTran 2.0 (Cat# [TT210002]).