

## Product datasheet for **TP308872M**

### Cathelicidin (CAMP) (NM\_004345) Human Recombinant Protein

#### Product data:

Product Type:	Recombinant Proteins
Description:	Recombinant protein of human cathelicidin antimicrobial peptide (CAMP), 100 µg
Species:	Human
Expression Host:	HEK293T
Expression cDNA Clone or AA Sequence:	>RC208872 protein sequence <b>Red</b> =Cloning site <b>Green</b> =Tags(s)
	 MKTQRDGHSLGRWSLVLLLLGLVMPLAIIAQVLSYKEAVLRAIDGINQRSSDANLYRLLDLDPRPTMDGD PDTPKPVSFVTKETVCPRTTQQSPEDCDFKKDGLVKRCMGTVTLNQARGSFDISCDKDNKRFFALLGDFFR KSKEKIGKEFKRIVQRIKDFLRNLVPRTES  <b>TRTRPLEQKLISEEDLAANDILDYKDDDDKV</b>
Tag:	C-Myc/DDK
Predicted MW:	19.1 kDa
Concentration:	>0.05 µg/µL as determined by microplate BCA method
Purity:	> 80% as determined by SDS-PAGE and Coomassie blue staining
Buffer:	25 mM Tris-HCl, 100 mM glycine, pH 7.3, 10% glycerol
Preparation:	Recombinant protein was captured through anti-DDK affinity column followed by conventional chromatography steps.
Note:	For testing in cell culture applications, please filter before use. Note that you may experience some loss of protein during the filtration process.
Storage:	Store at -80°C.
Stability:	Stable for 12 months from the date of receipt of the product under proper storage and handling conditions. Avoid repeated freeze-thaw cycles.
RefSeq:	<a href="#">NP_004336</a>
Locus ID:	820
UniProt ID:	<a href="#">P49913</a> , <a href="#">J3KNB4</a> , <a href="#">A0A384NPRO</a>
RefSeq Size:	758



[View online »](#)

Cytogenetics: 3p21.31

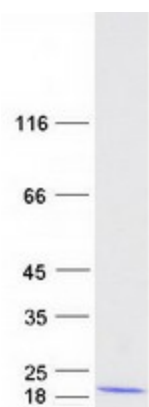
RefSeq ORF: 510

Synonyms: CAP-18; CAP18; CRAMP; FALL-39; FALL39; HSD26; LL37

**Summary:** This gene encodes a member of an antimicrobial peptide family, characterized by a highly conserved N-terminal signal peptide containing a cathelin domain and a structurally variable cationic antimicrobial peptide, which is produced by extracellular proteolysis from the C-terminus. In addition to its antibacterial, antifungal, and antiviral activities, the encoded protein functions in cell chemotaxis, immune mediator induction, and inflammatory response regulation. [provided by RefSeq, Sep 2014]

**Protein Families:** Secreted Protein, Transmembrane

### Product images:



Coomassie blue staining of purified CAMP protein (Cat# [TP308872]). The protein was produced from HEK293T cells transfected with CAMP cDNA clone (Cat# [RC208872]) using MegaTran 2.0 (Cat# [TT210002]).