

Product datasheet for **TP308870M**

PRR4 (NM_007244) Human Recombinant Protein

Product data:

Product Type:	Recombinant Proteins
Description:	Purified recombinant protein of Homo sapiens proline rich 4 (lacrimal) (PRR4), transcript variant 2, 100 µg
Species:	Human
Expression Host:	HEK293T
Expression cDNA Clone or AA Sequence:	>RC208870 representing NM_007244 Red =Cloning site Green =Tags(s) MLLVLLSVLLALSSAQSTDNDVNYEDFTFTIPDVEDSSQRPDQGPQRPPPEGLLP RPPGDSGNQDDGP Q QRPPKPGGHHRHPPPPPFQNNQRPPQRGHRQLSLPRFPSVSLQEASSFFRRDRPARHPQEQLW TRTRPLEQKLISEEDLAANDILDYKDDDDKV
Tag:	C-Myc/DDK
Predicted MW:	14.9 kDa
Concentration:	>0.05 µg/µL as determined by microplate BCA method
Purity:	> 80% as determined by SDS-PAGE and Coomassie blue staining
Buffer:	25 mM Tris-HCl, 100 mM glycine, pH 7.3, 10% glycerol
Preparation:	Recombinant protein was captured through anti-DDK affinity column followed by conventional chromatography steps.
Note:	For testing in cell culture applications, please filter before use. Note that you may experience some loss of protein during the filtration process.
Storage:	Store at -80°C.
Stability:	Stable for 12 months from the date of receipt of the product under proper storage and handling conditions. Avoid repeated freeze-thaw cycles.
RefSeq:	<u>NP_009175</u>
Locus ID:	11272
UniProt ID:	<u>Q16378</u>


[View online »](#)

RefSeq Size: 507

Cytogenetics: 12p13.2

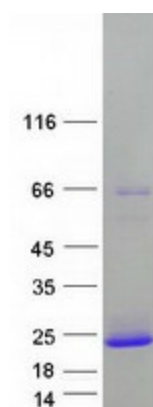
RefSeq ORF: 402

Synonyms: LPRP; PROL4

Summary: This gene encodes a member of the proline-rich protein family that lacks a conserved repetitive domain. This protein may play a role in protective functions in the eye. Alternative splicing result in multiple transcript variants. Read-through transcription also exists between this gene and the upstream PRH1 (proline-rich protein HaeIII subfamily 1) gene. [provided by RefSeq, Feb 2011]

Protein Families: Secreted Protein

Product images:



Coomassie blue staining of purified PRR4 protein (Cat# [TP308870]). The protein was produced from HEK293T cells transfected with PRR4 cDNA clone (Cat# [RC208870]) using MegaTran 2.0 (Cat# [TT210002]).