

Product datasheet for **TP308869M**

NPM3 (NM_006993) Human Recombinant Protein

Product data:

Product Type: Recombinant Proteins

Description: Recombinant protein of human nucleophosmin/nucleoplasmin, 3 (NPM3), 100 µg

Species: Human

Expression Host: HEK293T

Expression cDNA Clone or AA Sequence: >RC208869 protein sequence
Red=Cloning site **Green**=Tags(s)

MAAGTAAALAFLSQESRTRAGGVGGLRVPAPVTMDSFFFGCSELSGHTRSFTFKVEEEDDAEHVLALTMCL
LTEGAKDECNVVEVARNHDHQEIAVPVANLKLSCQPMLSLLDDFQLQPPVTFRLKSGSGPVTRITGRHQIV
TMSNDVSEEESEEEEDSDEEEVELCPILPAKKQGGRP

TRTRPLEQKLISEEDLAANDILDYKDDDDKV

Tag: C-Myc/DDK

Predicted MW: 19.2 kDa

Concentration: >0.05 µg/µL as determined by microplate BCA method

Purity: > 80% as determined by SDS-PAGE and Coomassie blue staining

Buffer: 25 mM Tris-HCl, 100 mM glycine, pH 7.3, 10% glycerol

Preparation: Recombinant protein was captured through anti-DDK affinity column followed by conventional chromatography steps.

Note: For testing in cell culture applications, please filter before use. Note that you may experience some loss of protein during the filtration process.

Storage: Store at -80°C.

Stability: Stable for 12 months from the date of receipt of the product under proper storage and handling conditions. Avoid repeated freeze-thaw cycles.

RefSeq: [NP_008924](#)

Locus ID: 10360

UniProt ID: [O75607](#)

RefSeq Size: 904



[View online »](#)

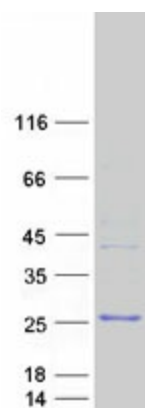
Cytogenetics: 10q24.32

RefSeq ORF: 534

Synonyms: PORMIN; TMEM123

Summary: The protein encoded by this gene is related to the nuclear chaperone phosphoproteins, nucleoplasmin and nucleophosmin. This protein is strongly expressed in diverse cell types where it localizes primarily to the nucleus. Based on its similarity to nucleoplasmin and nucleophosmin, this protein likely functions as a molecular chaperone in the cell nucleus. [provided by RefSeq, Oct 2008]

Product images:



Coomassie blue staining of purified NPM3 protein (Cat# [TP308869]). The protein was produced from HEK293T cells transfected with NPM3 cDNA clone (Cat# [RC208869]) using MegaTran 2.0 (Cat# [TT210002]).