

Product datasheet for **TP308865L**

DCUN1D2 (NM_001014283) Human Recombinant Protein

Product data:

Product Type: Recombinant Proteins

Description: Recombinant protein of human DCN1, defective in cullin neddylation 1, domain containing 2 (*S. cerevisiae*) (DCUN1D2), 1 mg

Species: Human

Expression Host: HEK293T

Expression cDNA Clone or AA Sequence: >RC208865 protein sequence
Red=Cloning site **Green**=Tags(s)

MHKLKSSQKDKVRQFMACTQAGERTAIYCLTQNEWRLDEATDSFFQNPDSLHRESMRNAVDKKKLERLYG
RYKDPQDENKIGVDGIQQFCDDLSDLPASISVLVIAWKFRAATQCEFSRKEFLDGMTELGCDMEKALKAL
LPRLEQELKDTAKFKDFYQFTTFKPNPGQKGLDLEMAVAYWKLVLVLSGRFKFLDLWNTFLMEHHKRSIPR
DTWNLLLDLDFGNMIADDMSNYDEEGAWPVLIDDFVEYARPVVTGGKRSLF

TRTRPLEQKLISEEDLAANDILDYKDDDDKV

Tag: C-Myc/DDK

Predicted MW: 30 kDa

Concentration: >0.05 µg/µL as determined by microplate BCA method

Purity: > 80% as determined by SDS-PAGE and Coomassie blue staining

Buffer: 25 mM Tris-HCl, 100 mM glycine, pH 7.3, 10% glycerol

Preparation: Recombinant protein was captured through anti-DDK affinity column followed by conventional chromatography steps.

Note: For testing in cell culture applications, please filter before use. Note that you may experience some loss of protein during the filtration process.

Storage: Store at -80°C.

Stability: Stable for 12 months from the date of receipt of the product under proper storage and handling conditions. Avoid repeated freeze-thaw cycles.

RefSeq: [NP_001014305](#)

Locus ID: 55208



[View online »](#)

UniProt ID: [Q6PH85](#)

RefSeq Size: 3046

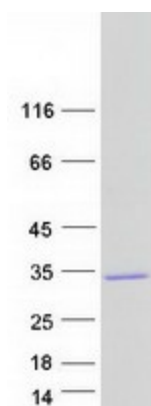
Cytogenetics: 13q34

RefSeq ORF: 777

Synonyms: C13orf17

Summary: Potently stimulates the neddylation of cullin components of SCF-type E3 ubiquitin ligase complexes from the NEDD8-conjugating E2 enzyme UBC12. Neddylation of cullins play an essential role in the regulation of SCF-type complexes activity.[UniProtKB/Swiss-Prot Function]

Product images:



Coomassie blue staining of purified DCUN1D2 protein (Cat# [TP308865]). The protein was produced from HEK293T cells transfected with DCUN1D2 cDNA clone (Cat# [RC208865]) using MegaTran 2.0 (Cat# [TT210002]).