

Product datasheet for TP308864

Vitamin D Binding protein (GC) (NM_000583) Human Recombinant Protein

Product data:

Product Type:	Recombinant Proteins
Description:	Recombinant protein of human group-specific component (vitamin D binding protein) (GC), 20 µg
Species:	Human
Expression Host:	HEK293T
Expression cDNA Clone or AA Sequence:	>RC208864 protein sequence Red =Cloning site Green =Tags(s)

MKRVLVLLLAFAFGHALERGRDYEKNKVCKEFSHLGKEDFTSLSLVLYSRKFPSGTFEQVSQLVKEVSL
TEACCAEGADPDCYDTRTSALSAKSCESNSPFPVHPGTAECCTKEGLERKLCMAALKHQPEFPTYVEPT
NDEICEAFRKDPKEYANQFMWEYSTNYGQAPLSLLVSYTKSYLSMVGSCCTSASPTVCFKERLQLKHL
LLTTLNVRCSQYAAYGEKKSRLSNLIKLAQKVPTADLEDVLPDVAEDITNLSKCCESASEDCMAKELPE
HTVKLCDNLSTKNSKFEDCCQEKAMDVFCVTFMPAAQLPELPDVELPTNKDVCDPGNTKVMKDYTFEL
SRRTHLPEVFLSKVLEPTLKSGLGECDDVEDSTTCFNAKGPLLKELSSFIDKQGQELCADYSENTFTEYKK
KLAERLKAKLPDATPTELAKLVNKRSDFFASNCCSINSPPLYCDSEIDAELKNIL

TRTRPLEQKLISEEDLAANDILDYKDDDDKV

Tag:	C-Myc/DDK
Predicted MW:	51.1 kDa
Concentration:	>0.05 µg/µL as determined by microplate BCA method
Purity:	> 80% as determined by SDS-PAGE and Coomassie blue staining
Buffer:	25 mM Tris-HCl, 100 mM glycine, pH 7.3, 10% glycerol
Preparation:	Recombinant protein was captured through anti-DDK affinity column followed by conventional chromatography steps.
Note:	For testing in cell culture applications, please filter before use. Note that you may experience some loss of protein during the filtration process.
Storage:	Store at -80°C.
Stability:	Stable for 12 months from the date of receipt of the product under proper storage and handling conditions. Avoid repeated freeze-thaw cycles.



[View online >](#)

RefSeq: [NP_000574](#)

Locus ID: 2638

UniProt ID: [P02774](#)

RefSeq Size: 2024

Cytogenetics: 4q13.3

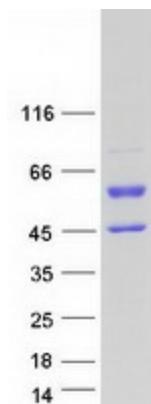
RefSeq ORF: 1422

Synonyms: DBP; DBP-maf; DBP/GC; Gc-MAF; GcMAF; GRD3; HEL-S-51; VDB; VDBG; VDBP

Summary: The protein encoded by this gene belongs to the albumin gene family. It is a multifunctional protein found in plasma, ascitic fluid, cerebrospinal fluid and on the surface of many cell types. It binds to vitamin D and its plasma metabolites and transports them to target tissues. Alternatively spliced transcript variants encoding different isoforms have been found for this gene.[provided by RefSeq, Feb 2011]

Protein Families: Secreted Protein

Product images:



Coomassie blue staining of purified GC protein (Cat# TP308864). The protein was produced from HEK293T cells transfected with GC cDNA clone (Cat# [RC208864]) using MegaTran 2.0 (Cat# [TT210002]).