

## Product datasheet for **TP308863M**

### LYZL6 (NM\_020426) Human Recombinant Protein

#### Product data:

**Product Type:** Recombinant Proteins

**Description:** Recombinant protein of human lysozyme-like 6 (LYZL6), 100 µg

**Species:** Human

**Expression Host:** HEK293T

**Expression cDNA Clone  
or AA Sequence:** >RC208863 protein sequence  
**Red**=Cloning site **Green**=Tags(s)

MTKALLIYLVSSFLALNQASLISRCDLAQVLQLEDLDGFEGYSLSDWLCLAFVESKFNISKINENADGSF  
DYGLFQINSHYWCNDYKSYSENLCNVDCQDLLNPNLLAGIHCAKRIVSGARGMNNWVEWRLHCSGRPLFY  
WLTGCRLR

**TRTRPLEQKLISEEDLAANDILDYKDDDDKV**

**Tag:** C-Myc/DDK

**Predicted MW:** 16.8 kDa

**Concentration:** >0.05 µg/µL as determined by microplate BCA method

**Purity:** > 80% as determined by SDS-PAGE and Coomassie blue staining

**Buffer:** 25 mM Tris-HCl, 100 mM glycine, pH 7.3, 10% glycerol

**Preparation:** Recombinant protein was captured through anti-DDK affinity column followed by conventional chromatography steps.

**Note:** For testing in cell culture applications, please filter before use. Note that you may experience some loss of protein during the filtration process.

**Storage:** Store at -80°C.

**Stability:** Stable for 12 months from the date of receipt of the product under proper storage and handling conditions. Avoid repeated freeze-thaw cycles.

**RefSeq:** [NP\\_065159](#)

**Locus ID:** 57151

**UniProt ID:** [O75951](#), [A0A080YUZ6](#)

**RefSeq Size:** 942



[View online »](#)

Cytogenetics: 17q12

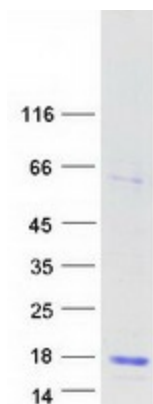
RefSeq ORF: 444

Synonyms: HEL-S-6a; LYC1; LYZB; PRO1485; TKAL754; UNQ754

**Summary:** This gene encodes a member of the C-type lysozyme/alpha-lactalbumin family. C-type lysozymes are bacteriolytic factors that play a role in host defense, whereas alpha-lactalbumins mediate lactose biosynthesis. The encoded protein contains catalytic residues characteristic of C-type lysozymes and may play a role in male reproduction. Alternatively spliced transcript variants have been observed for this gene. [provided by RefSeq, Jan 2011]

**Protein Families:** Secreted Protein

### Product images:



Coomassie blue staining of purified LYZL6 protein (Cat# [TP308863]). The protein was produced from HEK293T cells transfected with LYZL6 cDNA clone (Cat# [RC208863]) using MegaTran 2.0 (Cat# [TT210002]).