

## Product datasheet for **TP308863L**

### LYZL6 (NM\_020426) Human Recombinant Protein

#### Product data:

Product Type:	Recombinant Proteins
Description:	Recombinant protein of human lysozyme-like 6 (LYZL6), 1 mg
Species:	Human
Expression Host:	HEK293T
Expression cDNA Clone or AA Sequence:	>RC208863 protein sequence <b>Red</b> =Cloning site <b>Green</b> =Tags(s)
	 MTKALLIYLVSSFLALNQASLISRCDLAQVLQLEDLDGFEGYSLSDWLCLAFVESKFNISKINENADGSF DYGLFQINSHYWCNDYKSYSENLCVDCQDLLNPNLLAGIHCAKRIVSGARGMNNWVEWRLHCSGRPLFY WLTGCRLR  <b>TRTRPLEQKLISEEDLAANDILDYKDDDDKV</b>
Tag:	C-Myc/DDK
Predicted MW:	16.8 kDa
Concentration:	>0.05 µg/µL as determined by microplate BCA method
Purity:	> 80% as determined by SDS-PAGE and Coomassie blue staining
Buffer:	25 mM Tris-HCl, 100 mM glycine, pH 7.3, 10% glycerol
Preparation:	Recombinant protein was captured through anti-DDK affinity column followed by conventional chromatography steps.
Note:	For testing in cell culture applications, please filter before use. Note that you may experience some loss of protein during the filtration process.
Storage:	Store at -80°C.
Stability:	Stable for 12 months from the date of receipt of the product under proper storage and handling conditions. Avoid repeated freeze-thaw cycles.
RefSeq:	<a href="#">NP_065159</a>
Locus ID:	57151
UniProt ID:	<a href="#">O75951</a> , <a href="#">A0A080YUZ6</a>
RefSeq Size:	942



[View online »](#)

Cytogenetics: 17q12

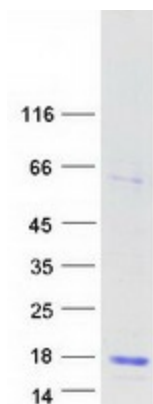
RefSeq ORF: 444

Synonyms: HEL-S-6a; LYC1; LYZB; PRO1485; TKAL754; UNQ754

**Summary:** This gene encodes a member of the C-type lysozyme/alpha-lactalbumin family. C-type lysozymes are bacteriolytic factors that play a role in host defense, whereas alpha-lactalbumins mediate lactose biosynthesis. The encoded protein contains catalytic residues characteristic of C-type lysozymes and may play a role in male reproduction. Alternatively spliced transcript variants have been observed for this gene. [provided by RefSeq, Jan 2011]

**Protein Families:** Secreted Protein

### Product images:



Coomassie blue staining of purified LYZL6 protein (Cat# [TP308863]). The protein was produced from HEK293T cells transfected with LYZL6 cDNA clone (Cat# [RC208863]) using MegaTran 2.0 (Cat# [TT210002]).