

## Product datasheet for **TP308830M**

### CPNE2 (NM\_152727) Human Recombinant Protein

#### Product data:

|                                       |  |
|---------------------------------------|--|
| Product Type:                         | Recombinant Proteins   |
| Description:                          | Recombinant protein of human copine II (CPNE2), 100 µg                       |
| Species:                              | Human  |
| Expression Host:                      | HEK293T  |
| Expression cDNA Clone or AA Sequence: | >RC208830 protein sequence<br><b>Red</b> =Cloning site <b>Green</b> =Tags(s) |

MAHIPSGGAPAAGAAPMGPQYCVCKVELSVSGQNLLDRDVTSKSDPFCVLFTENNGRWIEYDRTETAINN  
LNPAFSKKFVLDYHFEEVQKLKFDQDKSSMRLEHDFLGQFSCSLGTIVSSKKITRPLLLNDKPAG  
KGLITIAAQELSDNRVITLSLAGRRLDKDLFGKSDPFLEFYKPGDDGKWMLVHRTEVIKYTLDPVWKPF  
TVPLVSLCDGDMKPIQVMCYDYDNDGGHDFIGEFQTSVSQMCEARDSVPLEFECINPKKQRKKKNYKN  
S  
GIIILRSCKINRDYSFLDYILGGCQLMFTVGIDFTASNGNPLDPSSLHYINPMGTNEYLSAIWAVGQIIQ  
DYDSDKMFPALGFGAQLPPDWKVSHEFAINFNPTNPFCSGVDGIAQAYSACLPHIRFYGPTNFSPIVNHV  
ARFAAQATQQRATQYFILLITDGVISDMEETRHAHVQASKLPMSIIVGVGNADFAAMEFLDGD SRML  
RSHTGEEAARDIVQFVPFREFRNAKETLAKAVLAELPQQVQYFKHKNLPPTNSEPA

**TRTRPLEQKLISEEDLAANDILDYKDDDDKV**

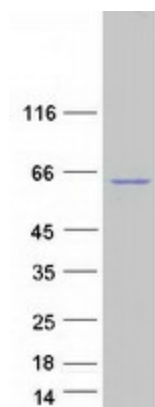
|                |  |
|----------------|--|
| Tag:           | C-Myc/DDK  |
| Predicted MW:  | 61 kDa   |
| Concentration: | >0.05 µg/µL as determined by microplate BCA method   |
| Purity:        | > 80% as determined by SDS-PAGE and Coomassie blue staining  |
| Buffer:        | 25 mM Tris-HCl, 100 mM glycine, pH 7.3, 10% glycerol   |
| Preparation:   | Recombinant protein was captured through anti-DDK affinity column followed by conventional chromatography steps.                                     |
| Note:          | For testing in cell culture applications, please filter before use. Note that you may experience some loss of protein during the filtration process. |
| Storage:       | Store at -80°C.  |



[View online »](#)

|                      |   |
|----------------------|---|
| <b>Stability:</b>    | Stable for 12 months from the date of receipt of the product under proper storage and handling conditions. Avoid repeated freeze-thaw cycles.   |
| <b>RefSeq:</b>       | <u>NP_689940</u>  |
| <b>Locus ID:</b>     | 221184  |
| <b>UniProt ID:</b>   | <u>Q96FN4</u>   |
| <b>RefSeq Size:</b>  | 2252  |
| <b>Cytogenetics:</b> | 16q13   |
| <b>RefSeq ORF:</b>   | 1644  |
| <b>Synonyms:</b>     | COPN2; CPN2   |
| <b>Summary:</b>      | Calcium-dependent membrane-binding proteins may regulate molecular events at the interface of the cell membrane and cytoplasm. This gene is one of several genes that encode a calcium-dependent protein containing two N-terminal type II C2 domains and an integrin A domain-like sequence in the C-terminus. Sequence analysis identified multiple alternatively spliced transcript variants but their full-length natures could not be determined. [provided by RefSeq, Jul 2008] |

## Product images:



Coomassie blue staining of purified CPNE2 protein (Cat# [TP308830]). The protein was produced from HEK293T cells transfected with CPNE2 cDNA clone (Cat# [RC208830]) using MegaTran 2.0 (Cat# [TT210002]).