

Product datasheet for **TP308821**

DCUN1D4 (NM_015115) Human Recombinant Protein

Product data:

Product Type:	Recombinant Proteins
Description:	Recombinant protein of human DCN1, defective in cullin neddylation 1, domain containing 4 (<i>S. cerevisiae</i>) (DCUN1D4), transcript variant 2, 20 µg
Species:	Human
Expression Host:	HEK293T
Expression cDNA Clone or AA Sequence:	>RC208821 protein sequence Red =Cloning site Green =Tags(s)
	 MHSDAAAVNFQLNSHLSTLANIHKIYHTLNKLNLTEDIGQDDHQTGSLRSCSSSDCFNKVMPPRKKRRPA SGDDLSAKKSRHDSMYRKYDSTRIKTEEEAFSSKRCLWFYFYAGTDDVVGPEGMEKFCEDIGVEPENVV MLVLAWKLDAQNMGYFTLQEWLKGMTSLQCDTTEKLRNTLDYLRNFLNDSTNFKLIYRYAFDFARQSKYK VINKDQWCNVLEFSRTINLDLSNYDEDGAWPVLLEFVWYKDKQMS TRTRPLEQKLISEEDLAANDILDYKDDDDKV
Tag:	C-Myc/DDK
Predicted MW:	29.8 kDa
Concentration:	>0.05 µg/µL as determined by microplate BCA method
Purity:	> 80% as determined by SDS-PAGE and Coomassie blue staining
Buffer:	25 mM Tris-HCl, 100 mM glycine, pH 7.3, 10% glycerol
Preparation:	Recombinant protein was captured through anti-DDK affinity column followed by conventional chromatography steps.
Note:	For testing in cell culture applications, please filter before use. Note that you may experience some loss of protein during the filtration process.
Storage:	Store at -80°C.
Stability:	Stable for 12 months from the date of receipt of the product under proper storage and handling conditions. Avoid repeated freeze-thaw cycles.
RefSeq:	<u>NP_055930</u>
Locus ID:	23142



[View online »](#)

UniProt ID: [Q92564](#)

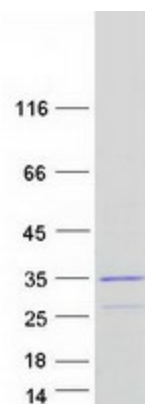
RefSeq Size: 4283

Cytogenetics: 4q12

RefSeq ORF: 771

Summary: Contributes to the neddylation of all cullins by transferring NEDD8 from N-terminally acetylated NEDD8-conjugating E2s enzyme to different cullin C-terminal domain-RBX complexes which are necessary for the activation of cullin-RING E3 ubiquitin ligases (CRLs). [UniProtKB/Swiss-Prot Function]

Product images:



Coomassie blue staining of purified DCUN1D4 protein (Cat# TP308821). The protein was produced from HEK293T cells transfected with DCUN1D4 cDNA clone (Cat# [RC208821]) using MegaTran 2.0 (Cat# [TT210002]).