

Product datasheet for **TP308806M**

NRARP (NM_001004354) Human Recombinant Protein

Product data:

Product Type:	Recombinant Proteins
Description:	Recombinant protein of human NOTCH-regulated ankyrin repeat protein (NRARP), 100 µg
Species:	Human
Expression Host:	HEK293T
Expression cDNA Clone or AA Sequence:	>RC208806 protein sequence Red =Cloning site Green =Tags(s) MSQAELSTCSAPQTQRIFQEAVRKGNTQELQSLNQNMTCFNVNSFGPEGQTALHQSVIDGNLELVKL L VKFGADIRLANRDGWSALHIAAFGGHQDIVLYLITKAKYAASGR TRTRPLEQKLISEEDLAANDILDYKDDDDKV
Tag:	C-Myc/DDK
Predicted MW:	12.3 kDa
Concentration:	>0.05 µg/µL as determined by microplate BCA method
Purity:	> 80% as determined by SDS-PAGE and Coomassie blue staining
Buffer:	25 mM Tris-HCl, 100 mM glycine, pH 7.3, 10% glycerol
Preparation:	Recombinant protein was captured through anti-DDK affinity column followed by conventional chromatography steps.
Note:	For testing in cell culture applications, please filter before use. Note that you may experience some loss of protein during the filtration process.
Storage:	Store at -80°C.
Stability:	Stable for 12 months from the date of receipt of the product under proper storage and handling conditions. Avoid repeated freeze-thaw cycles.
RefSeq:	<u>NP_001004354</u>
Locus ID:	441478
UniProt ID:	<u>Q7Z6K4</u>
RefSeq Size:	2639

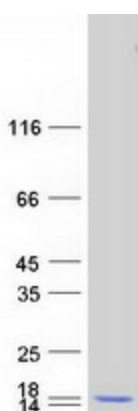

[View online »](#)

Cytogenetics: 9q34.3

RefSeq ORF: 342

Summary: Downstream effector of Notch signaling. Involved in the regulation of liver cancer cells self-renewal (PubMed:25985737). Involved in angiogenesis acting downstream of Notch at branch points to regulate vascular density. Proposed to integrate endothelial Notch and Wnt signaling to control stalk cell proliferation and to stabilize new endothelial connections during angiogenesis (PubMed:19154719). During somitogenesis involved in maintenance of proper somite segmentation and proper numbers of somites and vertebrae. Required for proper anterior-posterior somite patterning. Proposed to function in a negative feedback loop to destabilize Notch 1 intracellular domain (NICD) and downregulate the Notch signal, preventing expansion of the Notch signal into the anterior somite domain (By similarity). [UniProtKB/Swiss-Prot Function]

Product images:



Coomassie blue staining of purified NRARP protein (Cat# [TP308806]). The protein was produced from HEK293T cells transfected with NRARP cDNA clone (Cat# [RC208806]) using MegaTran 2.0 (Cat# [TT210002]).