

## Product datasheet for TP308793L

### C15orf38 (ARPIN) (NM\_182616) Human Recombinant Protein

#### Product data:

Product Type:	Recombinant Proteins
Description:	Recombinant protein of human chromosome 15 open reading frame 38 (C15orf38), 1 mg
Species:	Human
Expression Host:	HEK293T
Expression cDNA Clone or AA Sequence:	>RC208793 protein sequence <span style="color: red;">Red</span> =Cloning site <span style="color: green;">Green</span> =Tags(s)  MSRIYHDGALRNKAVQSVRLPGAWDPAAHQGGNGVLLEGELIDVSRHSILDTHGRKERYVLYIRPSHIH RRRKFDAGKNEIEPNFSATRKVNTGFLMSSYKVEAKGDTDRLTPEALKGLVNPPELLALTESLTPDHTVAF WMPSEMEVMELELGAGVRLKTRGDGPFLDSLAKLEAGVTKCNFTGDGKTGASWTDNIMAQKCSKGA AA EIREQGDGAEDEEWDD  <span style="color: red;">TR</span> <span style="color: green;">TRPLEQKLISEEDLAANDILDYKDDDDKV</span>
Tag:	C-Myc/DDK
Predicted MW:	24.8 kDa
Concentration:	>0.05 µg/µL as determined by microplate BCA method
Purity:	> 80% as determined by SDS-PAGE and Coomassie blue staining
Buffer:	25 mM Tris-HCl, 100 mM glycine, pH 7.3, 10% glycerol
Preparation:	Recombinant protein was captured through anti-DDK affinity column followed by conventional chromatography steps.
Note:	For testing in cell culture applications, please filter before use. Note that you may experience some loss of protein during the filtration process.
Storage:	Store at -80°C.
Stability:	Stable for 12 months from the date of receipt of the product under proper storage and handling conditions. Avoid repeated freeze-thaw cycles.
RefSeq:	<u><a href="#">NP_872422</a></u>
Locus ID:	348110


[View online »](#)

UniProt ID: [Q7Z6K5](#)

RefSeq Size: 6114

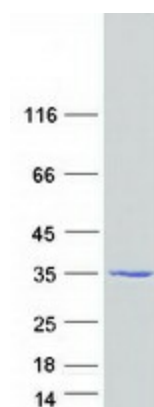
Cytogenetics: 15q26.1

RefSeq ORF: 678

Synonyms: C15orf38

**Summary:** Regulates actin polymerization by inhibiting the actin-nucleating activity of the Arp2/3 complex; the function is competitive with nucleation promoting factors. Participates in an incoherent feedforward loop at the lamellipodium tip where it inhibits the ARP2/2 complex in response to Rac signaling and where Rac also stimulates actin polymerization through the WAVE complex. Involved in steering cell migration by controlling its directional persistence. [UniProtKB/Swiss-Prot Function]

## Product images:



Coomassie blue staining of purified ARPIN protein (Cat# [TP308793]). The protein was produced from HEK293T cells transfected with ARPIN cDNA clone (Cat# [RC208793]) using MegaTran 2.0 (Cat# [TT210002]).