

## Product datasheet for **TP308791L**

### Carboxypeptidase H (CPE) (NM\_001873) Human Recombinant Protein

#### Product data:

**Product Type:** Recombinant Proteins

**Description:** Recombinant protein of human carboxypeptidase E (CPE), 1 mg

**Species:** Human

**Expression Host:** HEK293T

**Expression cDNA Clone or AA Sequence:** >RC208791 representing NM\_001873

Red=Cloning site Green=Tags(s)

MAGRGG SALLALCGALAACGWLLGAEAEQEPGAPAAGMRRRRRLQQEDGISFEYHRYPELREALVSVWLQC  
TAISRIYTVGRSFEGRELLVIELSDNPGVHEPGEPEFKYIGNMHGNEAVGRELLIFLAQYLCNEYQKGN  
TIVNLIHSTRIHIMPSLNPDGFEKAASQPGEKDWVFGVGRSNAQGIDLNRNFPDLDRIVVNEKEGGPNNH  
LLKNMKKIVDQNTKLAPETKAVIHWIMDIPVLSANLHGGDLVANYPYDETRSGSAHEYSSSPDDAIFQS  
LARAYSSFNPAMSDPNRPPCRKNDDSSFVDGTTNGGAWYSVPGGMQDFNYLSSNCFEITVELSCEKFPP  
EETLKTYWEDNKNSLISYLEQIHRGVKGFVRDLQGNPIANATISVEGIDHDVTSKDG DYWRLLIPGNYK  
LTASAPGYLAITKKVAVPYSPAAGVDFELESFSEKKEEKEELMEWWKMMSETLNF

TRTRPLEQKLISEEDLAANDILDYKDDDDKV

**Tag:** C-Myc/DDK

**Predicted MW:** 50.8 kDa

**Concentration:** >0.05 µg/µL as determined by microplate BCA method

**Purity:** > 80% as determined by SDS-PAGE and Coomassie blue staining

**Buffer:** 25 mM Tris-HCl, 100 mM glycine, pH 7.3, 10% glycerol

**Preparation:** Recombinant protein was captured through anti-DDK affinity column followed by conventional chromatography steps.

**Note:** For testing in cell culture applications, please filter before use. Note that you may experience some loss of protein during the filtration process.

**Storage:** Store at -80°C.

**Stability:** Stable for 12 months from the date of receipt of the product under proper storage and handling conditions. Avoid repeated freeze-thaw cycles.

**RefSeq:** [NP\\_001864](#)



[View online »](#)

Locus ID: 1363

UniProt ID: [P16870](#), [A0A384N679](#)

RefSeq Size: 2443

Cytogenetics: 4q32.3

RefSeq ORF: 1428

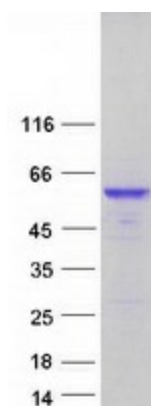
Synonyms: CPH; IDDHH

**Summary:** This gene encodes a member of the M14 family of metallo-carboxypeptidases. The encoded preproprotein is proteolytically processed to generate the mature peptidase. This peripheral membrane protein cleaves C-terminal amino acid residues and is involved in the biosynthesis of peptide hormones and neurotransmitters, including insulin. This protein may also function independently of its peptidase activity, as a neurotrophic factor that promotes neuronal survival, and as a sorting receptor that binds to regulated secretory pathway proteins, including prohormones. Mutations in this gene are implicated in type 2 diabetes. [provided by RefSeq, Nov 2015]

**Protein Families:** Druggable Genome, Protease, Secreted Protein

**Protein Pathways:** Type I diabetes mellitus

### Product images:



Coomassie blue staining of purified CPE protein (Cat# [TP308791]). The protein was produced from HEK293T cells transfected with CPE cDNA clone (Cat# [RC208791]) using MegaTran 2.0 (Cat# [TT210002]).