

Product datasheet for TP308791

Carboxypeptidase H (CPE) (NM_001873) Human Recombinant Protein

Product data:

Product Type:	Recombinant Proteins
Description:	Recombinant protein of human carboxypeptidase E (CPE), 20 µg
Species:	Human
Expression Host:	HEK293T
Expression cDNA Clone or AA Sequence:	>RC208791 representing NM_001873 Red=Cloning site Green=Tags(s)

MAGRGG SALLALCGALAACGWLLGAEAEQEPGAPAAGMRRRRRLQQEDGISFEYHRYPELREALVSVWLQC
TAISRIYTVGRSFEGRELLVIELSDNPGVHEPGEPEFKYIGNMHGNEAVGRELLIFLAQYLCNEYQKGN
TIVNLIHSTRIHIMPSLNPDGFEKAASQPGEKDWVFGVGRSNAQGIDLNRNFPDLDRIVYVNEKEGGPNNH
LLKNMKKIVDQNTKLAPETKAVIHWIMDIPVLSANLHGGDLVANYPYDETRSGSAHEYSSSPDDAIFQS
LARAYSSFNPAMSDPNRPPCRKNDDSSFVDGTTNGGAWYVPGGMQDFNYLSSNCFEITVELSCEKFP
EETLKTYWEDNKNSLISYLEQIHRGVKGFVRDLQGNPIANATISVEGIDHDVTSKDG DYWRLLIPGNYK
LTASAPGYLAITKKVAVPYSPAAGVDFELESFSEKKEEELMEWWKMMSETLNF

TRTRPLEQKLISEEDLAANDILDYKDDDDKV

Tag:	C-Myc/DDK
Predicted MW:	50.8 kDa
Concentration:	>0.05 µg/µL as determined by microplate BCA method
Purity:	> 80% as determined by SDS-PAGE and Coomassie blue staining
Buffer:	25 mM Tris-HCl, 100 mM glycine, pH 7.3, 10% glycerol
Preparation:	Recombinant protein was captured through anti-DDK affinity column followed by conventional chromatography steps.
Note:	For testing in cell culture applications, please filter before use. Note that you may experience some loss of protein during the filtration process.
Storage:	Store at -80°C.
Stability:	Stable for 12 months from the date of receipt of the product under proper storage and handling conditions. Avoid repeated freeze-thaw cycles.
RefSeq:	NP_001864



[View online »](#)

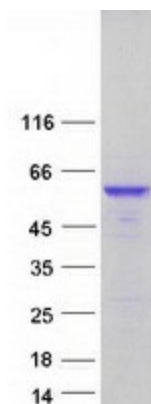
Locus ID:	1363
UniProt ID:	P16870 , A0A384N679
RefSeq Size:	2443
Cytogenetics:	4q32.3
RefSeq ORF:	1428
Synonyms:	CPH; IDDHH

Summary: This gene encodes a member of the M14 family of metalloproteases. The encoded preproprotein is proteolytically processed to generate the mature peptidase. This peripheral membrane protein cleaves C-terminal amino acid residues and is involved in the biosynthesis of peptide hormones and neurotransmitters, including insulin. This protein may also function independently of its peptidase activity, as a neurotrophic factor that promotes neuronal survival, and as a sorting receptor that binds to regulated secretory pathway proteins, including prohormones. Mutations in this gene are implicated in type 2 diabetes. [provided by RefSeq, Nov 2015]

Protein Families: Druggable Genome, Protease, Secreted Protein

Protein Pathways: Type I diabetes mellitus

Product images:



Coomassie blue staining of purified CPE protein (Cat# TP308791). The protein was produced from HEK293T cells transfected with CPE cDNA clone (Cat# [RC208791]) using MegaTran 2.0 (Cat# [TT210002]).