

Product datasheet for TP308763L

p40 (RABEPK) (NM_005833) Human Recombinant Protein

Product data:

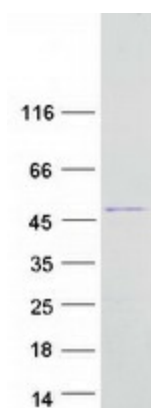
Product Type:	Recombinant Proteins
Description:	Recombinant protein of human Rab9 effector protein with kelch motifs (RABEPK), 1 mg
Species:	Human
Expression Host:	HEK293T
Expression cDNA Clone or AA Sequence:	>RC208763 representing NM_005833 Red =Cloning site Green =Tags(s) MKQLPVLEPGDKPRKATWYTLVPGDSPCARVGHSCSYLPPVGNARHGKVFIVGGANPNRSFSDVHTMDL GKHQWDLDTCKGLLPRYEHASFIPSCPTDRIWVFGGANQSGNRNCLQVLNPETRTWTTPEVTSPPSPRT FHTSSAAIGNQLYVFGGGERGAQPVDTKLHVFDANTLWSQPETLGNPPSPRHGHVMVAAGTKLFIHGG LAGDRFYDDLHCIDISDMKWQKLNPTGAAPAGCAAHSAVAMGKHVYIFGGMTPAGALDTMYQYHTEEQHW TLLKFDTLPPGRLDHSMCIPWPVTCASEKEDSNLTLNHEAEKEDSADKVMESHSGDSHEESQTATLLC LVFGGMNTEGEIYDDCIVTVD TRTRPLEQKLISEEDLAANDILDYKDDDDKV
Tag:	C-Myc/DDK
Predicted MW:	40.4 kDa
Concentration:	>0.05 µg/µL as determined by microplate BCA method
Purity:	> 80% as determined by SDS-PAGE and Coomassie blue staining
Buffer:	25 mM Tris-HCl, 100 mM glycine, pH 7.3, 10% glycerol
Preparation:	Recombinant protein was captured through anti-DDK affinity column followed by conventional chromatography steps.
Note:	For testing in cell culture applications, please filter before use. Note that you may experience some loss of protein during the filtration process.
Storage:	Store at -80°C.
Stability:	Stable for 12 months from the date of receipt of the product under proper storage and handling conditions. Avoid repeated freeze-thaw cycles.
RefSeq:	NP_005824
Locus ID:	10244



[View online »](#)

UniProt ID:	Q7Z6M1 , A0A024R8A0
RefSeq Size:	1721
Cytogenetics:	9q33.3
RefSeq ORF:	1116
Synonyms:	bA65N13.1; p40; RAB9P40
Summary:	Rab9 effector required for endosome to trans-Golgi network (TGN) transport.[UniProtKB/Swiss-Prot Function]
Protein Families:	Druggable Genome

Product images:



Coomassie blue staining of purified RABEPK protein (Cat# [TP308763]). The protein was produced from HEK293T cells transfected with RABEPK cDNA clone (Cat# [RC208763]) using MegaTran 2.0 (Cat# [TT210002]).