

Product datasheet for **TP308754M**

MAG (NM_002361) Human Recombinant Protein

Product data:

Product Type:	Recombinant Proteins
Description:	Recombinant protein of human myelin associated glycoprotein (MAG), transcript variant 1, 100 µg
Species:	Human
Expression Host:	HEK293T
Expression cDNA Clone or AA Sequence:	>RC208754 protein sequence Red =Cloning site Green =Tags(s)

MIFLTALPLFWIMISASRGGHWGAWMPSSISAFEGTCVSIPCRFDFPDELPAVWHGVWYFNSPYPKNYP
PVVFKSRTQVWHESFQGRSRLGDLGLRNCTLLSNVSPELGGKYYFRGDLGGYNQYTFSEHSVLDIVNT
PNIVPPEVVAGTEVEVSCMVPDNCPELRPELSWLGHEGLGEPVGLRREDEGTWVQVSLLFVPTREA
NGHRLGCQASFPNTTLQFEGYASMDVKYPPVIVEMNSSVEAIEGSHVSLLCGADSNPPPLLTWMRDGTVL
REAVAESLLELEEVTPAEDGVYACLAENAYGQDNRTVGLSVMYAPWKPTVNGTMVAVEGETVSILCSTQ
SNPDPILTIFKEKQILSTVIYESELQLELPAVSPEDDGEYWCVAENQYGQRATAFNLSVEFAPVLLLESH
CAAARDTVQCLCVKSNPEPSVAFELPSRNVTVNESEREFVYSERSGLVLTSILTRGQAQAPPRVICTA
RNLYGAKSLELPFQGAHRLMWAKIGPVGAWAFALIAIVCYITQTRRKNKNTESPSFSAGDNPPVLFSS
DFRISGAPEKYESERRLLGSERRLLGLRGEPPELDLSYSHSDLGKRPTKDSYTLTEELAEYAEIRVK

TRTRPLEQKLISEEDLAANDILDYKDDDDKV

Tag:	C-Myc/DDK
Predicted MW:	67.1 kDa
Concentration:	>0.05 µg/µL as determined by microplate BCA method
Purity:	> 80% as determined by SDS-PAGE and Coomassie blue staining
Buffer:	25 mM Tris-HCl, 100 mM glycine, pH 7.3, 10% glycerol
Preparation:	Recombinant protein was captured through anti-DDK affinity column followed by conventional chromatography steps.
Note:	For testing in cell culture applications, please filter before use. Note that you may experience some loss of protein during the filtration process.
Storage:	Store at -80°C.



[View online »](#)

Stability: Stable for 12 months from the date of receipt of the product under proper storage and handling conditions. Avoid repeated freeze-thaw cycles.

RefSeq: [NP_002352](#)

Locus ID: 4099

UniProt ID: [P20916](#), [Q53ES7](#)

RefSeq Size: 2458

Cytogenetics: 19q13.12

RefSeq ORF: 1878

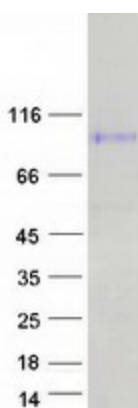
Synonyms: GMA; S-MAG; SIGLEC-4A; SIGLEC4A; SPG75

Summary: The protein encoded by this gene is a type I membrane protein and member of the immunoglobulin superfamily. It is thought to be involved in the process of myelination. It is a lectin that binds to sialylated glycoconjugates and mediates certain myelin-neuron cell-cell interactions. Three alternatively spliced transcripts encoding different isoforms have been described for this gene. [provided by RefSeq, Nov 2010]

Protein Families: Druggable Genome, Transmembrane

Protein Pathways: Cell adhesion molecules (CAMs)

Product images:



Coomassie blue staining of purified MAG protein (Cat# [TP308754]). The protein was produced from HEK293T cells transfected with MAG cDNA clone (Cat# [RC208754]) using MegaTran 2.0 (Cat# [TT210002]).