

Product datasheet for TP308754L

MAG (NM_002361) Human Recombinant Protein

Product data:

Product Type:	Recombinant Proteins
Description:	Recombinant protein of human myelin associated glycoprotein (MAG), transcript variant 1, 1 mg
Species:	Human
Expression Host:	HEK293T
Expression cDNA Clone or AA Sequence:	>RC208754 protein sequence Red =Cloning site Green =Tags(s)

MIFLTALPLFWIMISASRGGHWGAWMPSSISAFEGTCVSIPCRFDFPDELRPVAVHGVWYFNSPYPKNYP
PVVFKSRTQVWHESFQGRSRLGDLGLRNCTLLLSNVSPELGGKYYFRGDLGGYNQYTFSEHSVLDIVNT
PNIVPPEVVAGTEVEVSCMVPDNCPELRPELSWLGHEGLGEPVAVLGRRLREDEGTWVQVSLLFVPTREA
NGHRLGCQASFPNTTLQFEGYASMDVKYPPVIVEMNSSVEAIEGSHVSLLCGADSNPPPLLTWMRDGTVL
REAVAESLLELEEVTPAEDGVYACLAENAYGQDNRTVGLSVMYAPWKPTVNGTMVAVEGETVSILCSTQ
SNPDPILTIFKEKQILSTVIYESELQLELPAVSPEDDGEYWCVAENQYGQRATAFNLSVEFAPVLLLESH
CAAARDTVQCLCVKSNPEPSVAFELPSRNVTVNESEREFVYSERSGLVLTSILTRGQAQAPPRVICTA
RNLYGAKSLELPFQGAHRLMWAKIGPVGAWAFALIAIVCYITQTRRKNKNTESPSFSAGDNPPVLFSS
DFRISGAPEKYESERRLLGSERRLLGLRGEPPELDLSYSHSDLGKRPTKDSYTLTEELAEYAEIRVK

TRTRPLEQKLISEEDLAANDILDYKDDDDKV

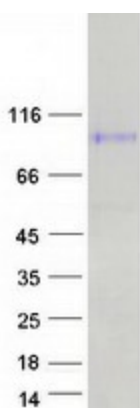
Tag:	C-Myc/DDK
Predicted MW:	67.1 kDa
Concentration:	>0.05 µg/µL as determined by microplate BCA method
Purity:	> 80% as determined by SDS-PAGE and Coomassie blue staining
Buffer:	25 mM Tris-HCl, 100 mM glycine, pH 7.3, 10% glycerol
Preparation:	Recombinant protein was captured through anti-DDK affinity column followed by conventional chromatography steps.
Note:	For testing in cell culture applications, please filter before use. Note that you may experience some loss of protein during the filtration process.
Storage:	Store at -80°C.



[View online »](#)

Stability:	Stable for 12 months from the date of receipt of the product under proper storage and handling conditions. Avoid repeated freeze-thaw cycles.
RefSeq:	NP_002352
Locus ID:	4099
UniProt ID:	P20916 , Q53ES7
RefSeq Size:	2458
Cytogenetics:	19q13.12
RefSeq ORF:	1878
Synonyms:	GMA; S-MAG; SIGLEC-4A; SIGLEC4A; SPG75
Summary:	The protein encoded by this gene is a type I membrane protein and member of the immunoglobulin superfamily. It is thought to be involved in the process of myelination. It is a lectin that binds to sialylated glycoconjugates and mediates certain myelin-neuron cell-cell interactions. Three alternatively spliced transcripts encoding different isoforms have been described for this gene. [provided by RefSeq, Nov 2010]
Protein Families:	Druggable Genome, Transmembrane
Protein Pathways:	Cell adhesion molecules (CAMs)

Product images:



Coomassie blue staining of purified MAG protein (Cat# [TP308754]). The protein was produced from HEK293T cells transfected with MAG cDNA clone (Cat# [RC208754]) using MegaTran 2.0 (Cat# [TT210002]).